

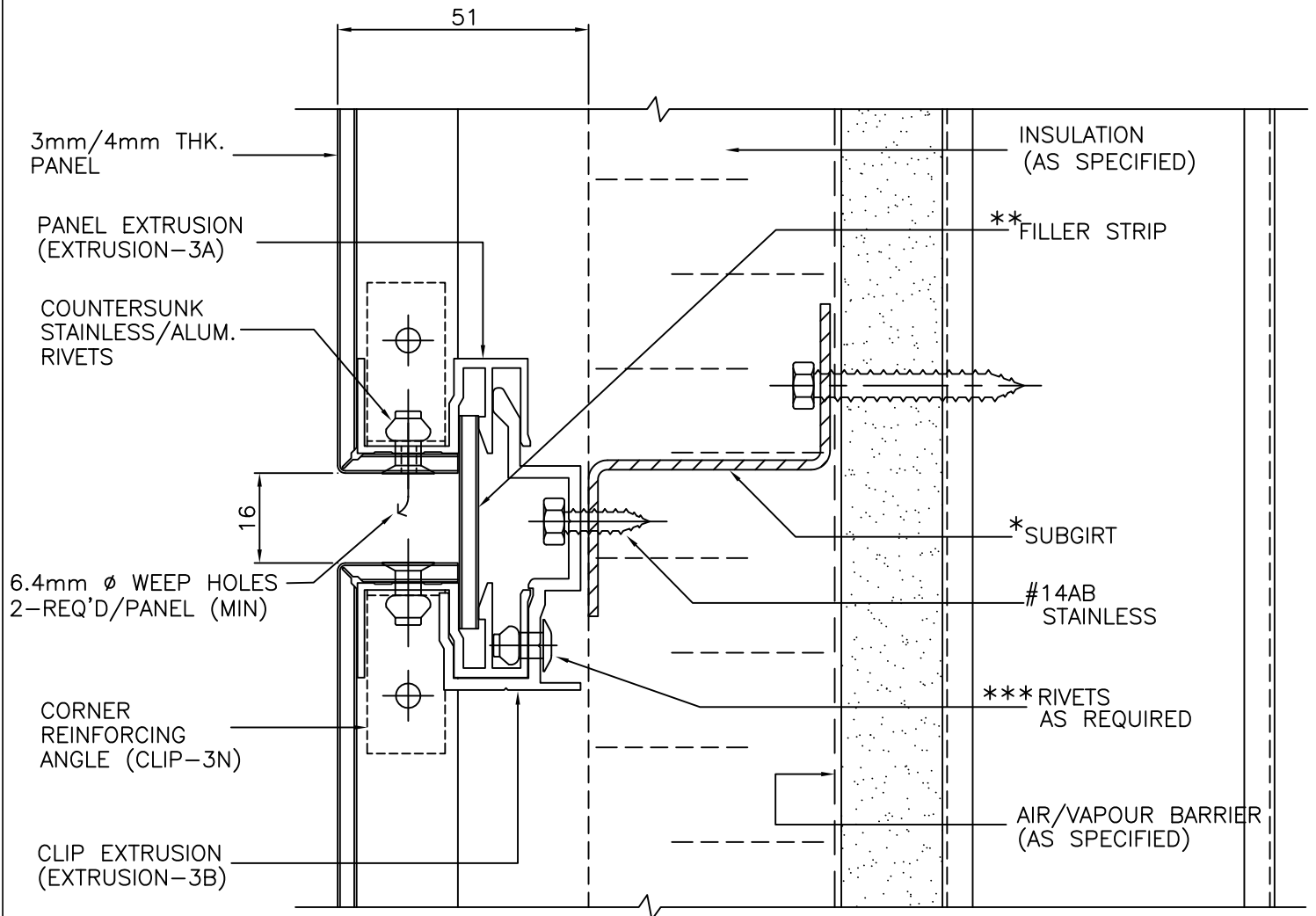


CADD BY:
 DATE: DEC. 17, 2002
 APPD. BY:
 REV. No:
 REV. 1 MAY 31, 2004

TITLE:
COMPOSITE PANEL SYSTEM 3

JOB No:
 SHEET No:
 1
 CAD FILE:
 CPS3R-DETAILS

ENGINEERING DEPT.



1 HORIZONTAL JOINT DETAIL

- * SUBGIRT TO SUIT PROJECT REQUIREMENTS
- ** 40mm FOR 4mm PANEL
- *** RIVET ONE CLIP TO EXTRUSION FOR EVERY 1500mm OF PANEL LENGTH. INSTALL RIVETED CLIPS IN MIDDLE 1200mm OF PANEL

Details must be reviewed and modified as required to suit individual project conditions

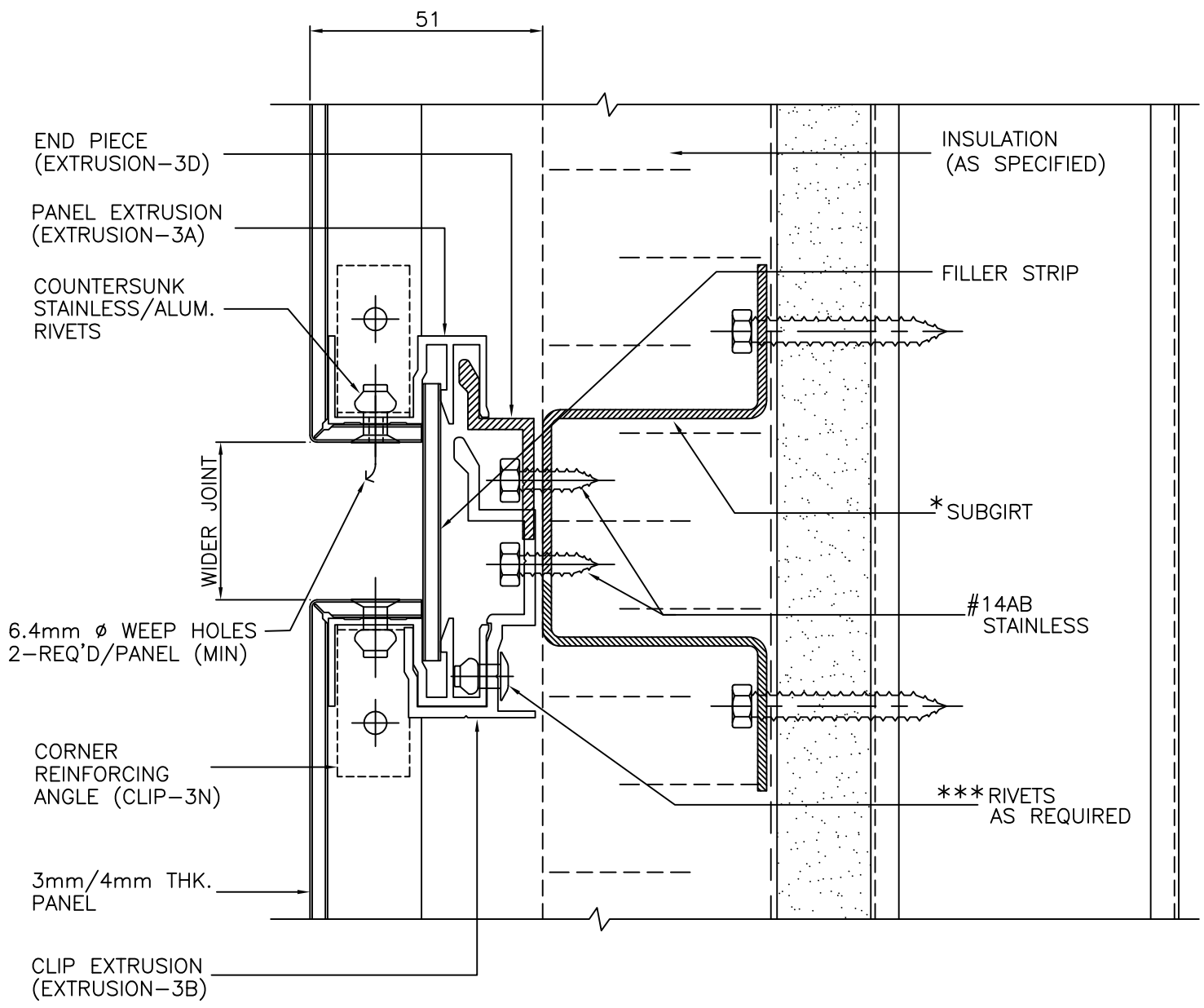


CADD BY:
 DATE: DEC. 17, 2002
 APPD. BY:
 REV. No:
 REV. 1 MAY 31, 2004

TITLE:
COMPOSITE PANEL SYSTEM 3

JOB No:
 SHEET No:
 1A
 CAD FILE:
 CPS3R-DETAILS

ENGINEERING DEPT.



1A HORIZONTAL JOINT DETAIL
 (ALTERNATE DETAIL)

* SUBGIRT TO SUIT PROJECT REQUIREMENTS
 *** RIVET ONE CLIP TO EXTRUSION FOR EVERY 1500mm OF PANEL LENGTH. INSTALL RIVETED CLIPS IN MIDDLE 1200mm OF PANEL

Details must be reviewed and modified as required to suit individual project conditions

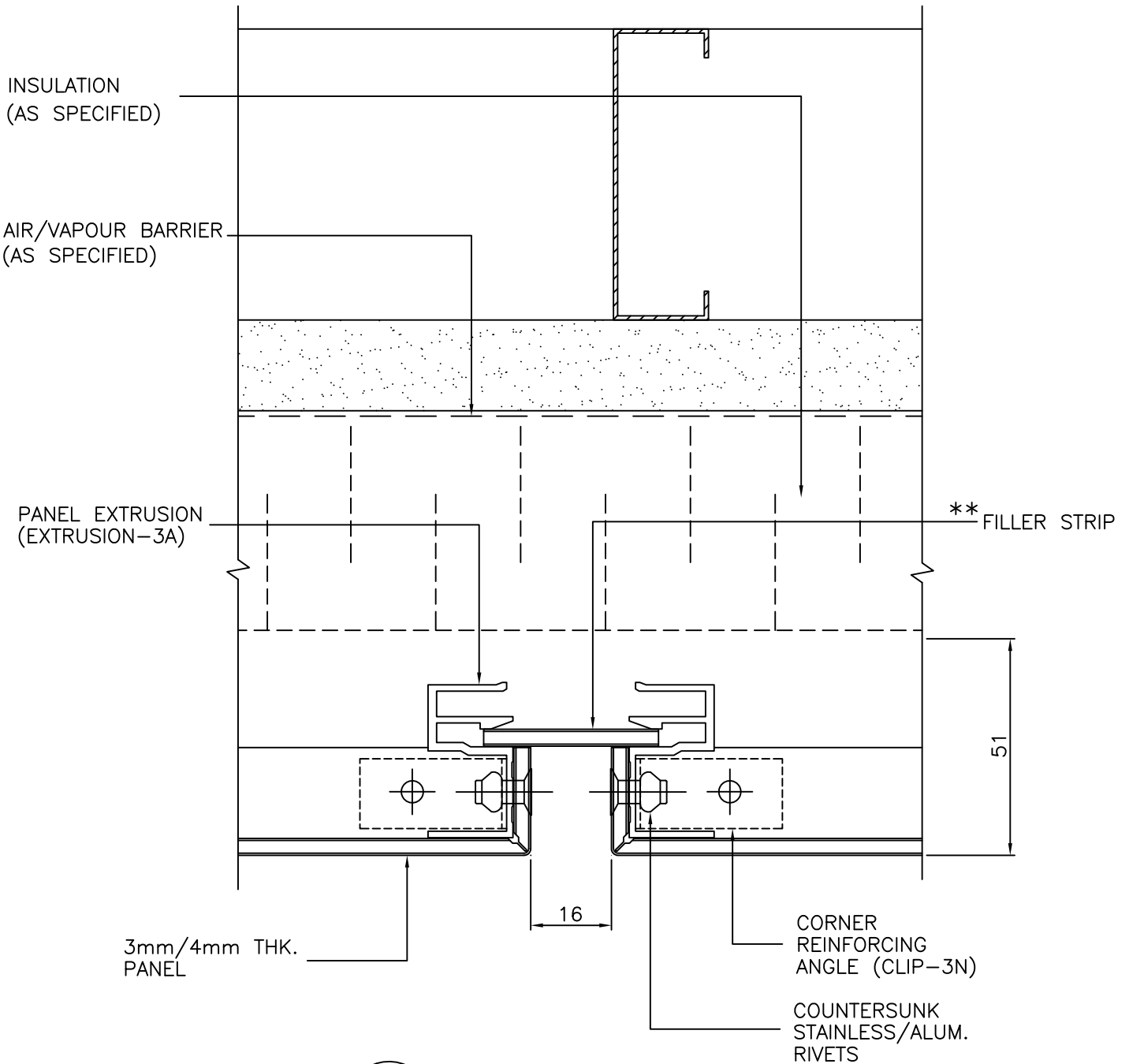


CADD BY:
DATE: DEC. 17, 2002
APPD. BY:
REV. No:
REV. \triangle 1 MAY 31, 2004

TITLE:
COMPOSITE PANEL SYSTEM 3

JOB No:
SHEET No:
2
CAD FILE:
CPS3R-DETAILS

ENGINEERING DEPT.



2 VERTICAL JOINT DETAIL

**40mm FOR 4mm PANEL

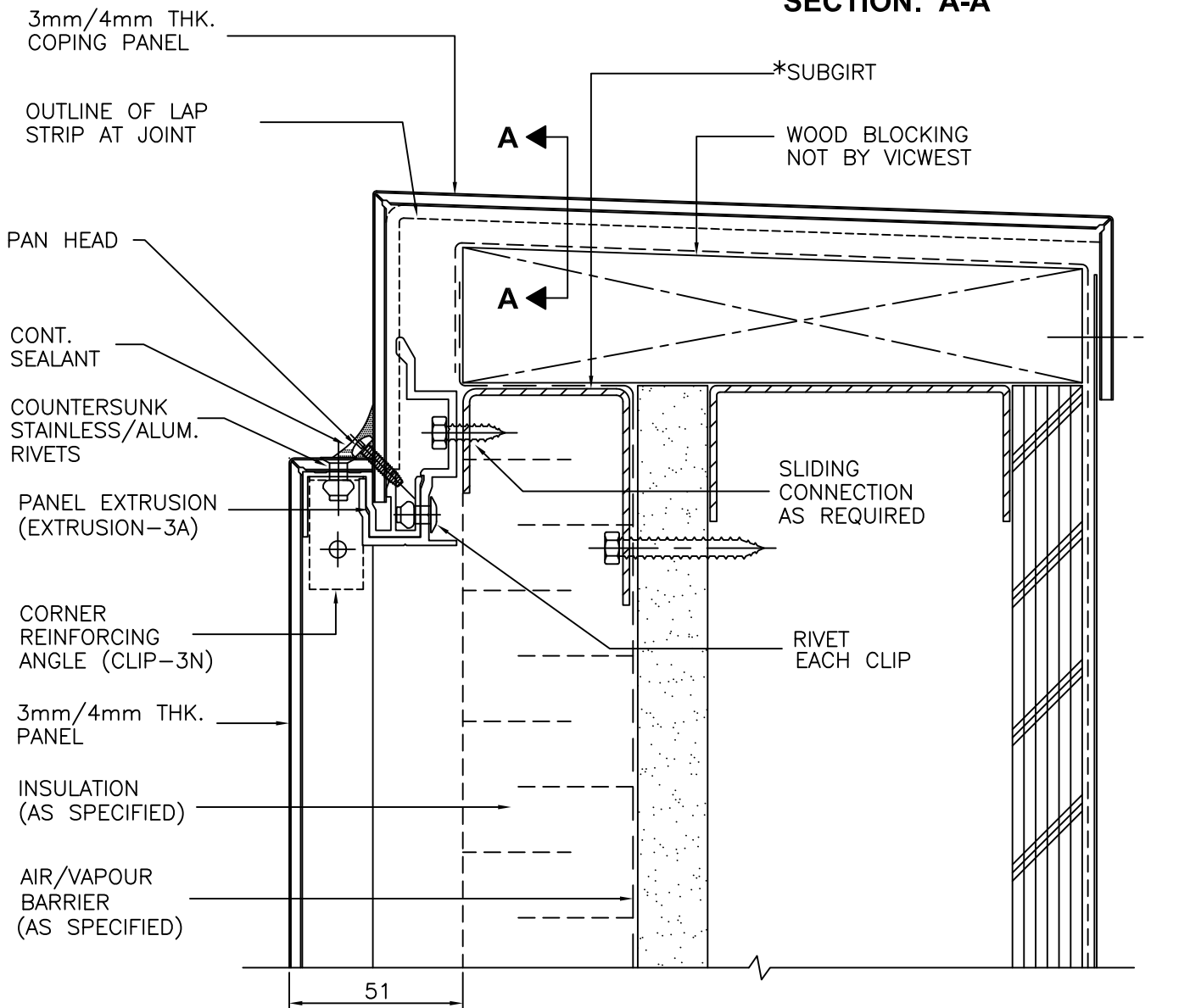
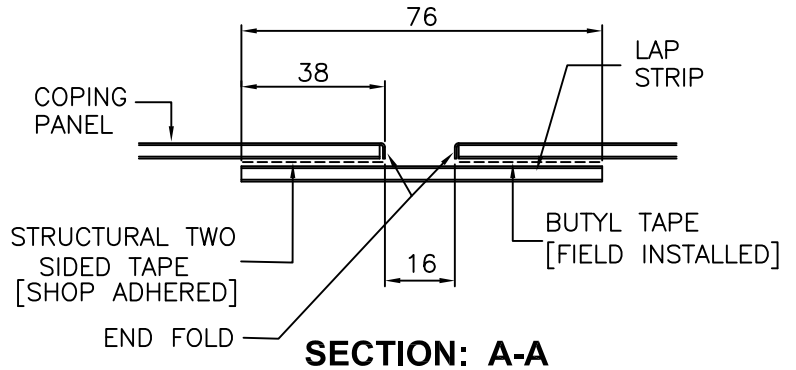


CADD BY:
 DATE: DEC. 17, 2002
 APPD. BY:
 REV. No:
 REV. 1 MAY 31, 2004

TITLE:
COMPOSITE PANEL SYSTEM 3

JOB No:
 SHEET No:
 3
 CAD FILE:
 CPS3R-DETAILS

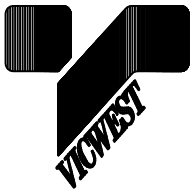
ENGINEERING DEPT.



* SUBGIRT TO SUIT PROJECT REQUIREMENTS

3 **PARAPET DETAIL**

Details must be reviewed and modified as required to suit individual project conditions

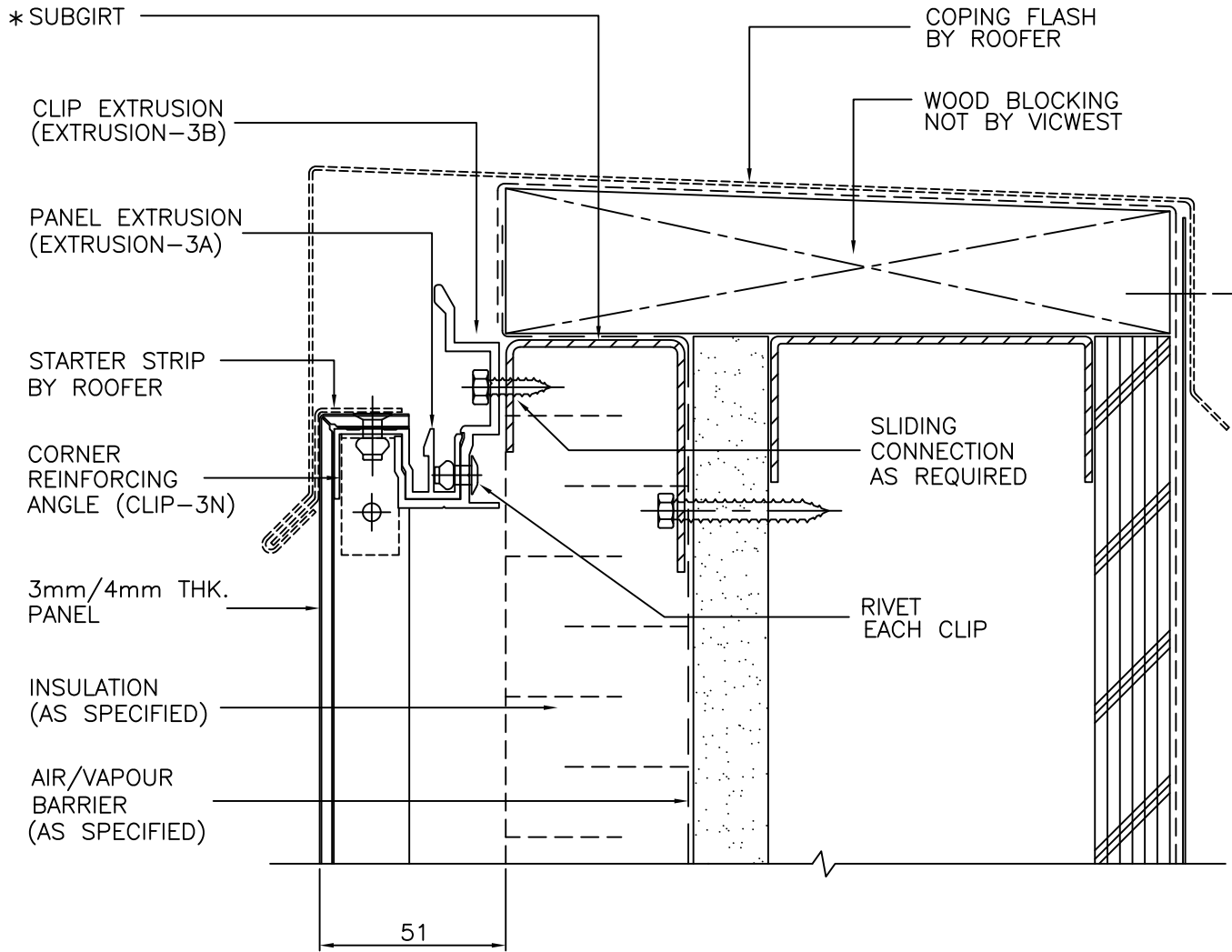


CADD BY:
 DATE: DEC. 17, 2002
 APPD. BY:
 REV. No:
 REV. 1 MAY 31, 2004

TITLE:
COMPOSITE PANEL SYSTEM 3

JOB No:
 SHEET No:
 3A
 CAD FILE:
 CPS3R-DETAILS

ENGINEERING DEPT.



3A **PARAPET DETAIL**
 (ALTERNATE DETAIL)

* SUBGIRT TO SUIT PROJECT REQUIREMENTS

Details must be reviewed and modified as required to suit individual project conditions

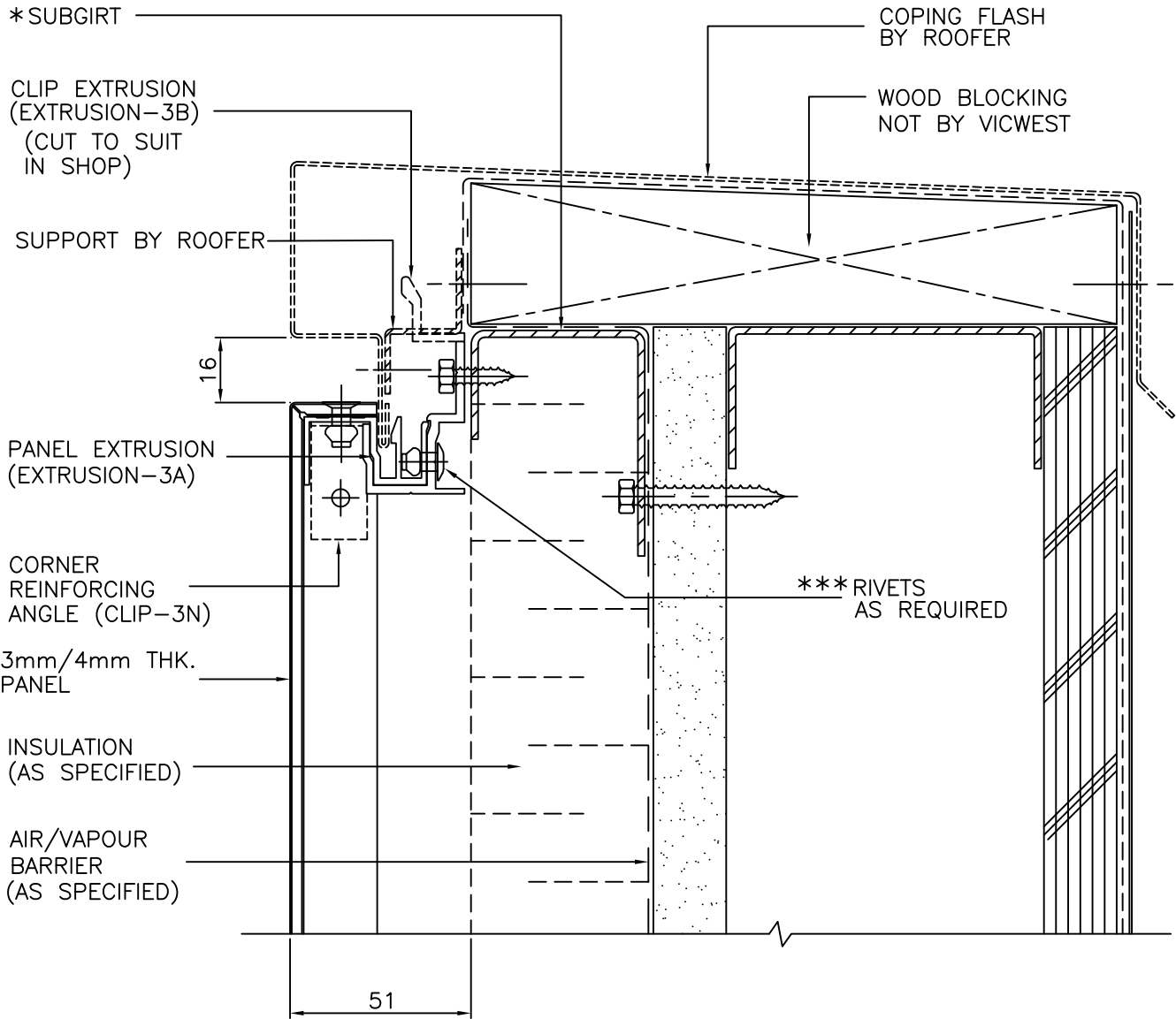


CADD BY:
 DATE: DEC. 17, 2002
 APPD. BY:
 REV. No:
 REV. 1 MAY 31, 2004

TITLE:
COMPOSITE PANEL SYSTEM 3

JOB No:
 SHEET No:
 3B
 CAD FILE:
 CPS3R-DETAILS

ENGINEERING DEPT.



3B PARAPET DETAIL
 (ALTERNATE DETAIL)

* SUBGIRT TO SUIT PROJECT REQUIREMENTS
 *** RIVET ONE CLIP TO EXTRUSION FOR EVERY 1500mm OF PANEL LENGTH. INSTALL RIVETED CLIPS IN MIDDLE 1200mm OF PANEL

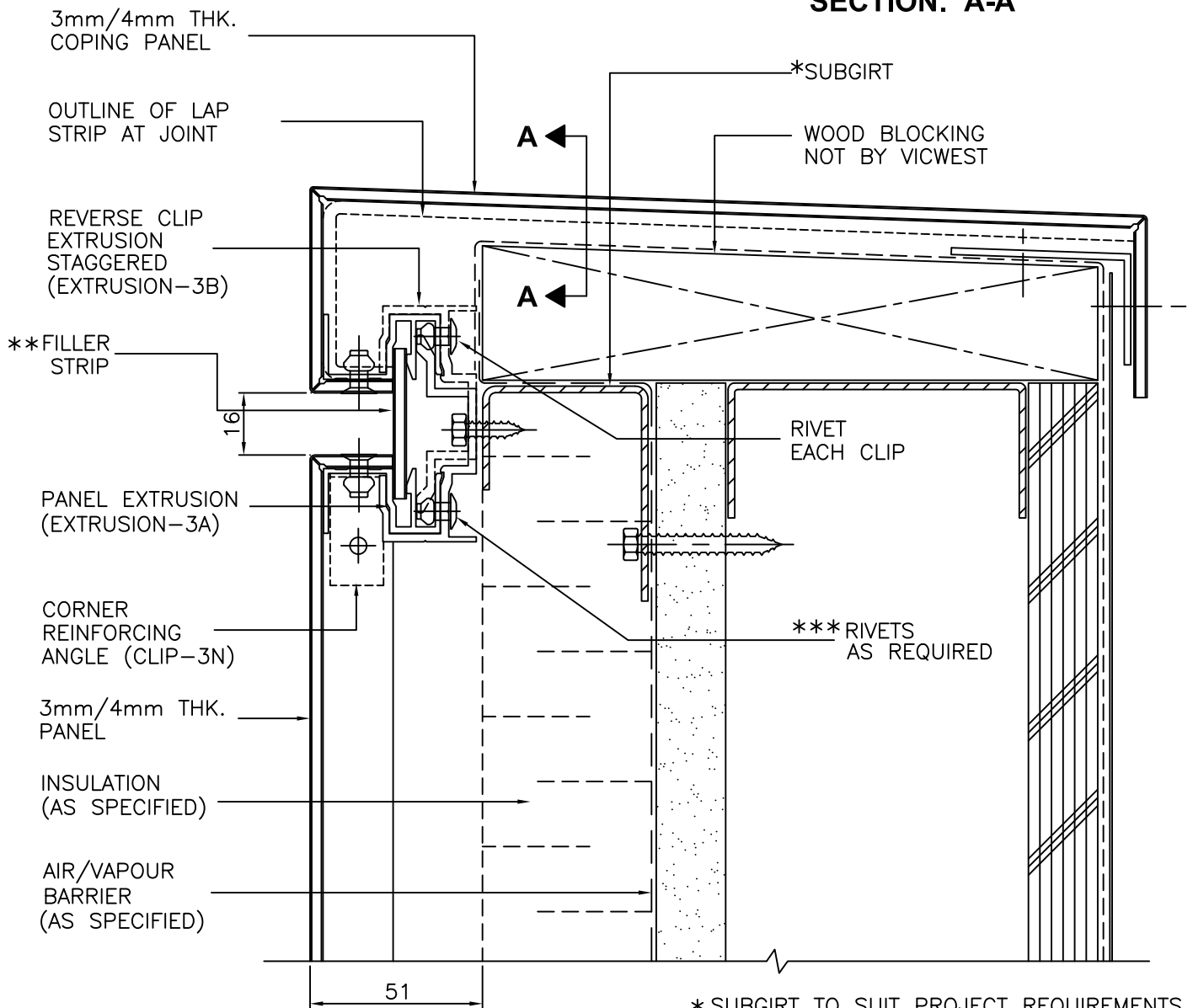
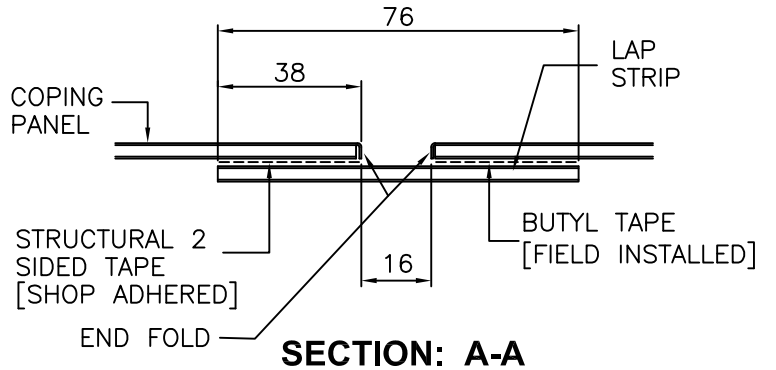


CADD BY:
 DATE: DEC. 17, 2002
 APPD. BY:
 REV. No:
 REV. 1 MAY 31, 2004

TITLE:
COMPOSITE PANEL SYSTEM 3

JOB No:
 SHEET No:
 3C
 CAD FILE:
 CPS3R-DETAILS

ENGINEERING DEPT.



3C PARAPET DETAIL
 (ALTERNATE DETAIL)

* SUBGIRT TO SUIT PROJECT REQUIREMENTS
 ** 40mm FOR 4mm PANEL
 *** RIVET ONE CLIP TO EXTRUSION FOR EVERY 1500mm OF PANEL LENGTH. INSTALL RIVETED CLIPS IN MIDDLE 1200mm OF PANEL

Details must be reviewed and modified as required to suit individual project conditions

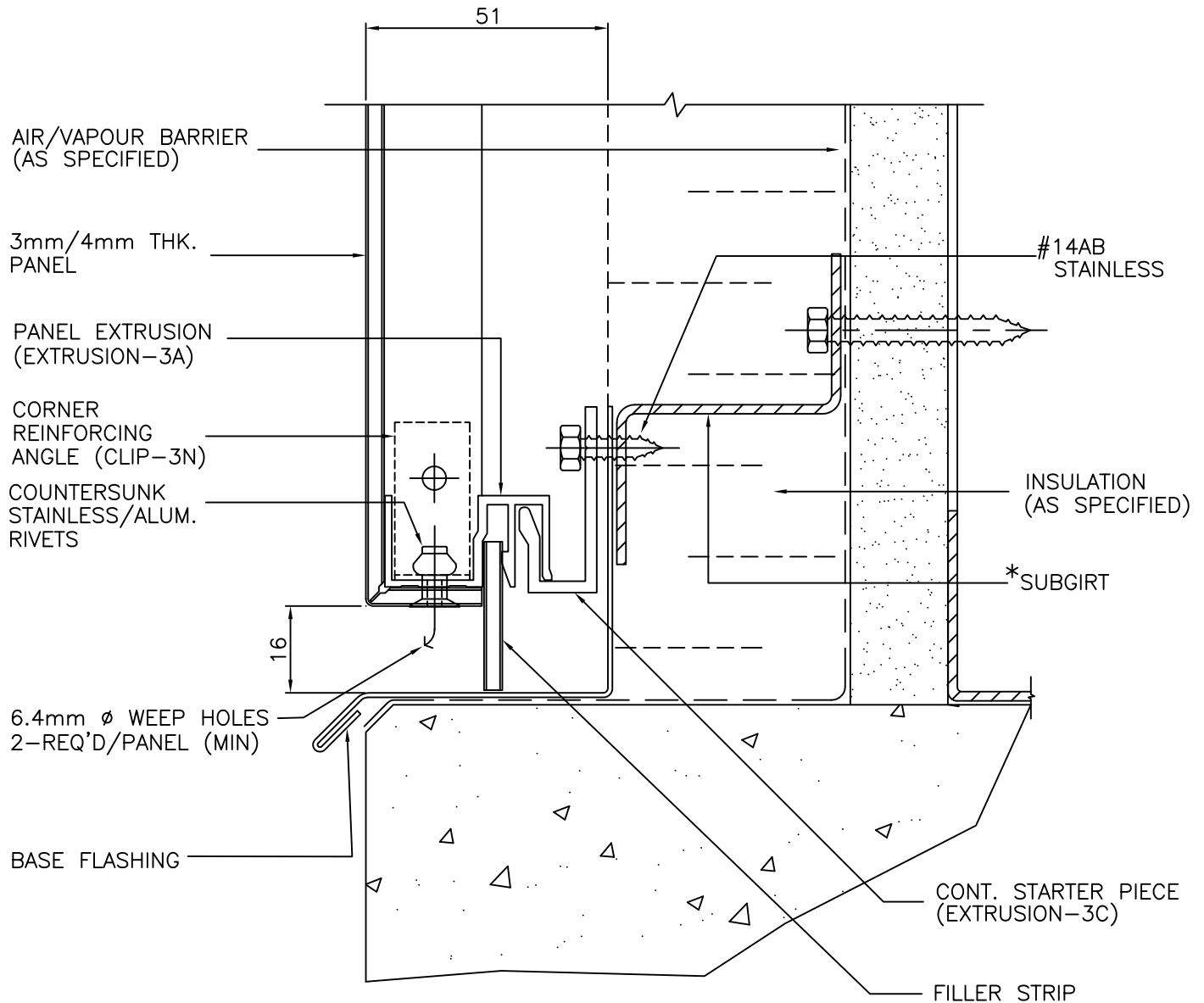


CADD BY:
 DATE: DEC. 17, 2002
 APPD. BY:
 REV. No:
 REV. 1 MAY 31, 2004

TITLE:
COMPOSITE PANEL SYSTEM 3

JOB No:
 SHEET No:
 4
 CAD FILE:
 CPS3R-DETAILS

ENGINEERING DEPT.



4 BASE DETAIL

*SUBGIRT TO SUIT PROJECT REQUIREMENTS

Details must be reviewed and modified as required to suit individual project conditions

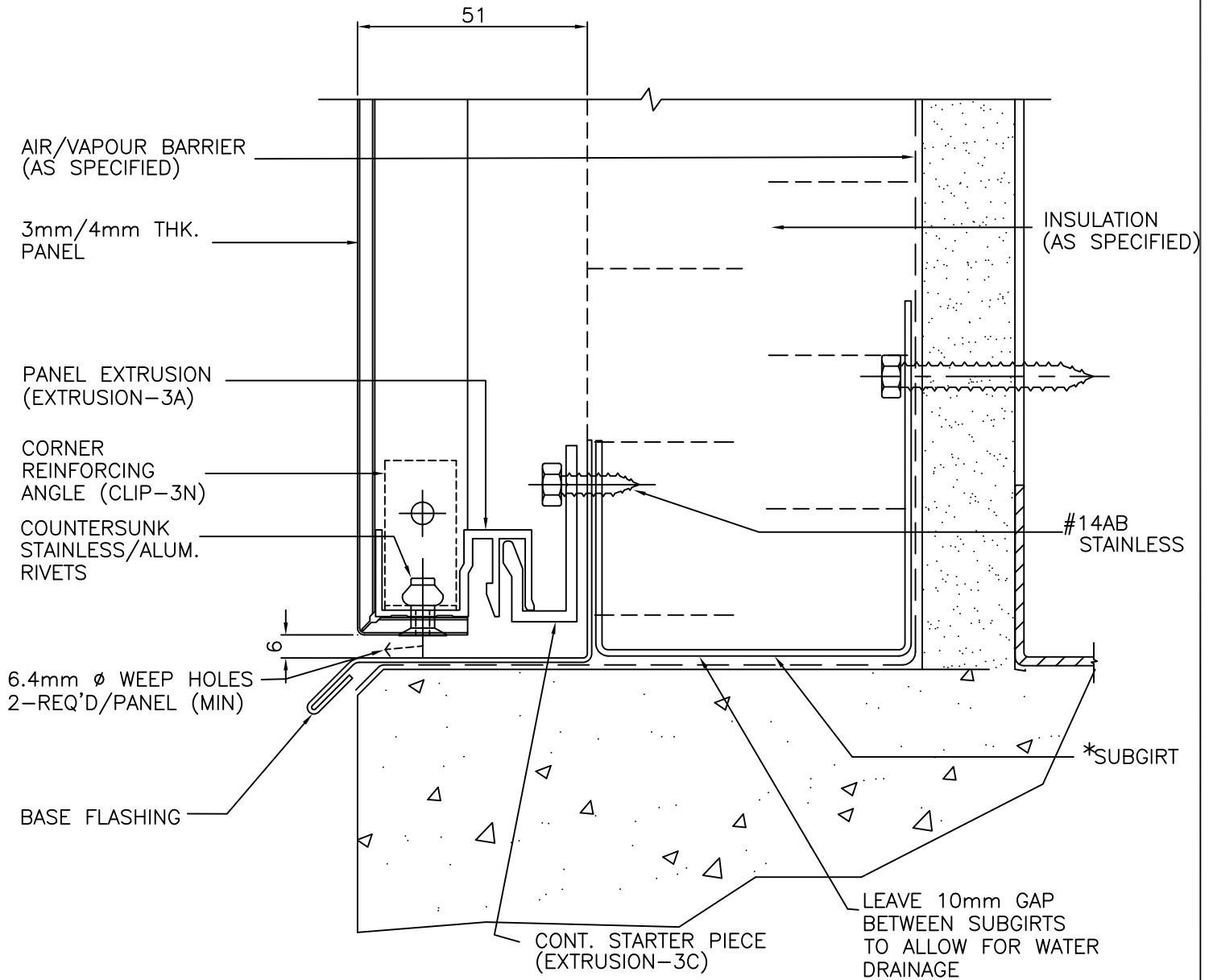


CADD BY:
 DATE: DEC. 17, 2002
 APPD. BY:
 REV. No:
 REV. 1 MAY 31, 2004

TITLE:
COMPOSITE PANEL SYSTEM 3

JOB No:
 SHEET No:
 4A
 CAD FILE:
 CPS3R-DETAILS

ENGINEERING DEPT.



4A

**BASE DETAIL
 (ALTERNATE DETAIL)**

* SUBGIRT TO SUIT PROJECT REQUIREMENTS

Details must be reviewed and modified as required to suit individual project conditions

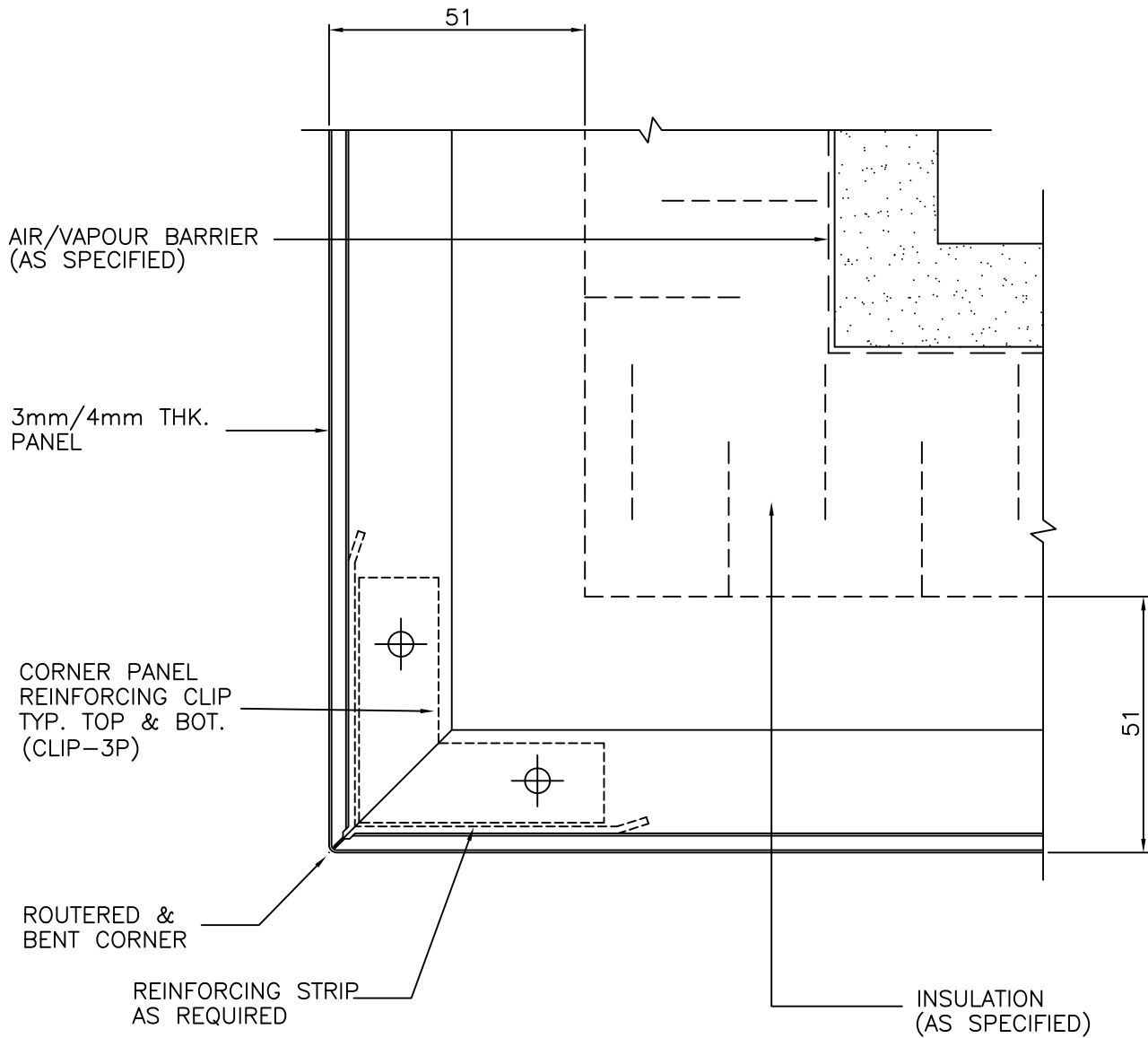


CADD BY:
DATE: DEC. 17, 2002
APPD. BY:
REV. No:

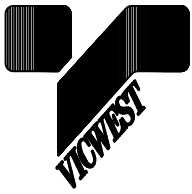
TITLE:
COMPOSITE PANEL SYSTEM 3

JOB No:
SHEET No:
5
CAD FILE:
CPS3-DETAILS

ENGINEERING DEPT.



5 CORNER DETAIL

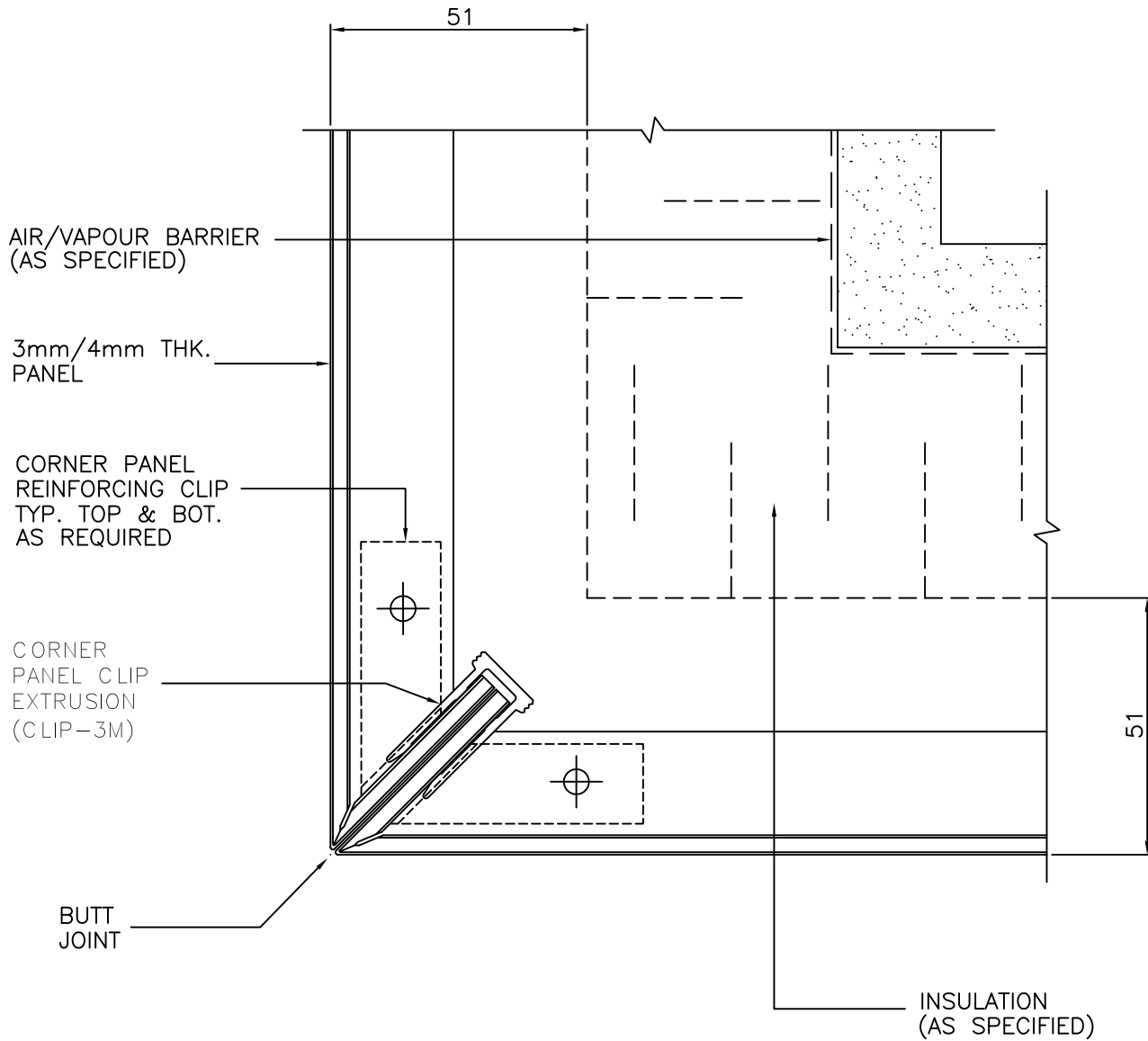


CADD BY:
 DATE: DEC. 17, 2002
 APPD. BY:
 REV. No:

TITLE:
COMPOSITE PANEL SYSTEM 3

JOB No:
 SHEET No:
 5A
 CAD FILE:
 CPS3-DETAILS

ENGINEERING DEPT.



5A CORNER DETAIL
 (ALTERNATE DETAIL)

NOTE:

CORNER JOINT IS REQUIRED WHEN
 PANEL SIZE EXCEEDS MATERIAL GIRTH
 LIMITATIONS.

Details must be reviewed and modified as required to suit individual project conditions



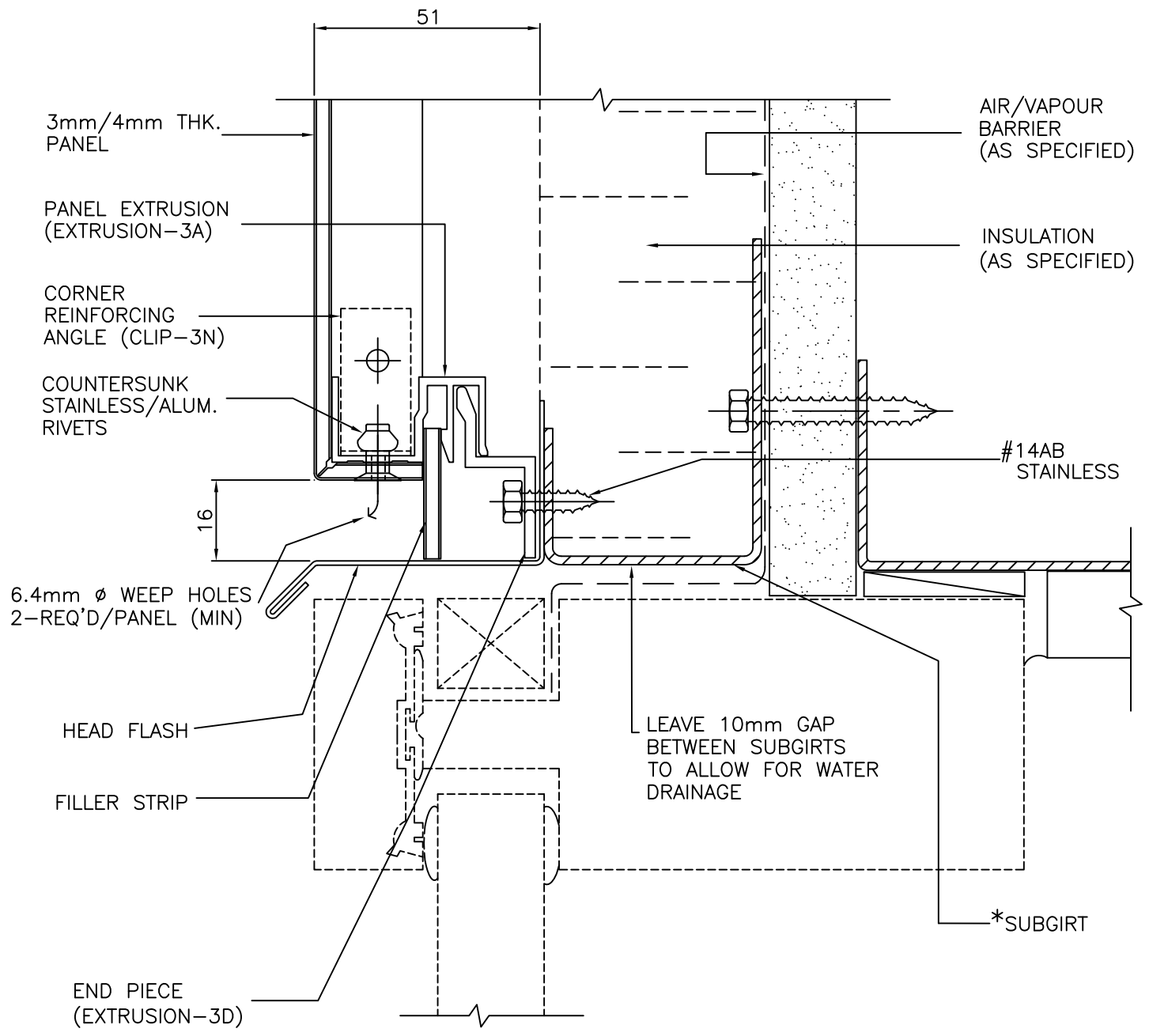
CADD BY:
 DATE: DEC. 17, 2002
 APPD. BY:
 REV. No:
 REV. 1 MAY 31, 2004

TITLE:
COMPOSITE PANEL SYSTEM 3

JOB No:
 SHEET No:
 6

ENGINEERING DEPT.

CAD FILE:
 CPS3R-DETAILS



6 WINDOW HEAD DETAIL

NOTE: IMPORTANT

WINDOW HEAD FLASHING CONFIGURATION MAY VARY DEPENDING ON TYPE & LOCATION OF WINDOW. (WINDOW NOT BY VICWEST)

* SUBGIRT TO SUIT PROJECT REQUIREMENTS

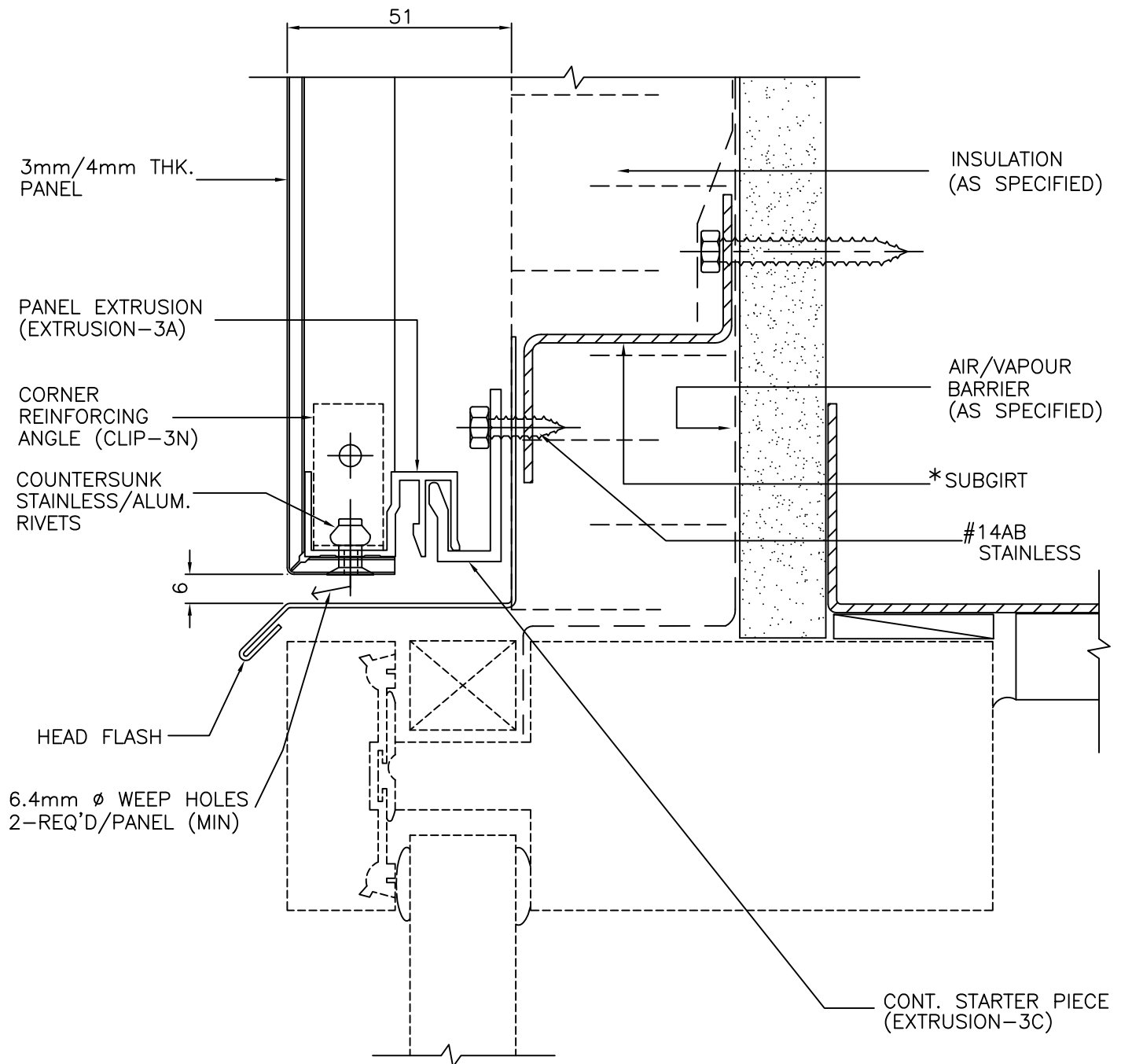


CADD BY:
 DATE: DEC. 17, 2002
 APPD. BY:
 REV. No:
 REV. 1 MAY 31, 2004

TITLE:
COMPOSITE PANEL SYSTEM 3

JOB No:
 SHEET No:
 6A
 CAD FILE:
 CPS3R-DETAILS

ENGINEERING DEPT.



6A WINDOW HEAD DETAIL
 (ALTERNATE DETAIL)

NOTE: IMPORTANT

* SUBGIRT TO SUIT PROJECT REQUIREMENTS

WINDOW HEAD FLASHING CONFIGURATION
 MAY VARY DEPENDING ON TYPE & LOCATION
 OF WINDOW. (WINDOW NOT BY VICWEST)

Details must be reviewed and modified as required to suit individual project conditions

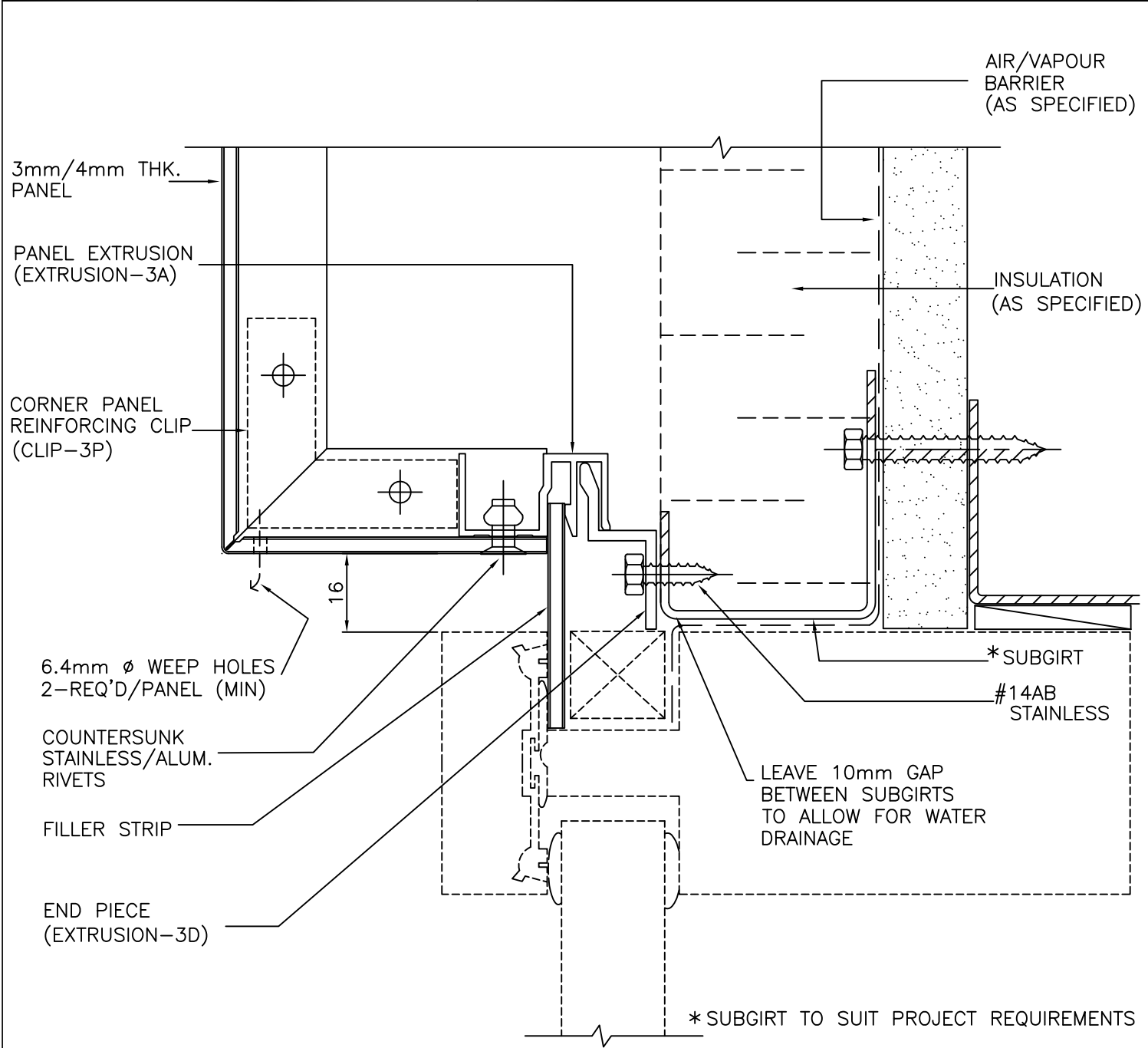


CADD BY:
DATE: DEC. 17, 2002
APPD. BY:
REV. No:
REV. 1 MAY 31, 2004

TITLE:
COMPOSITE PANEL SYSTEM 3

JOB No:
SHEET No:
6B
CAD FILE:
CPS3R-DETAILS

ENGINEERING DEPT.



6B WINDOW HEAD DETAIL
(ALTERNATE DETAIL)

Details must be reviewed and modified as required to suit individual project conditions

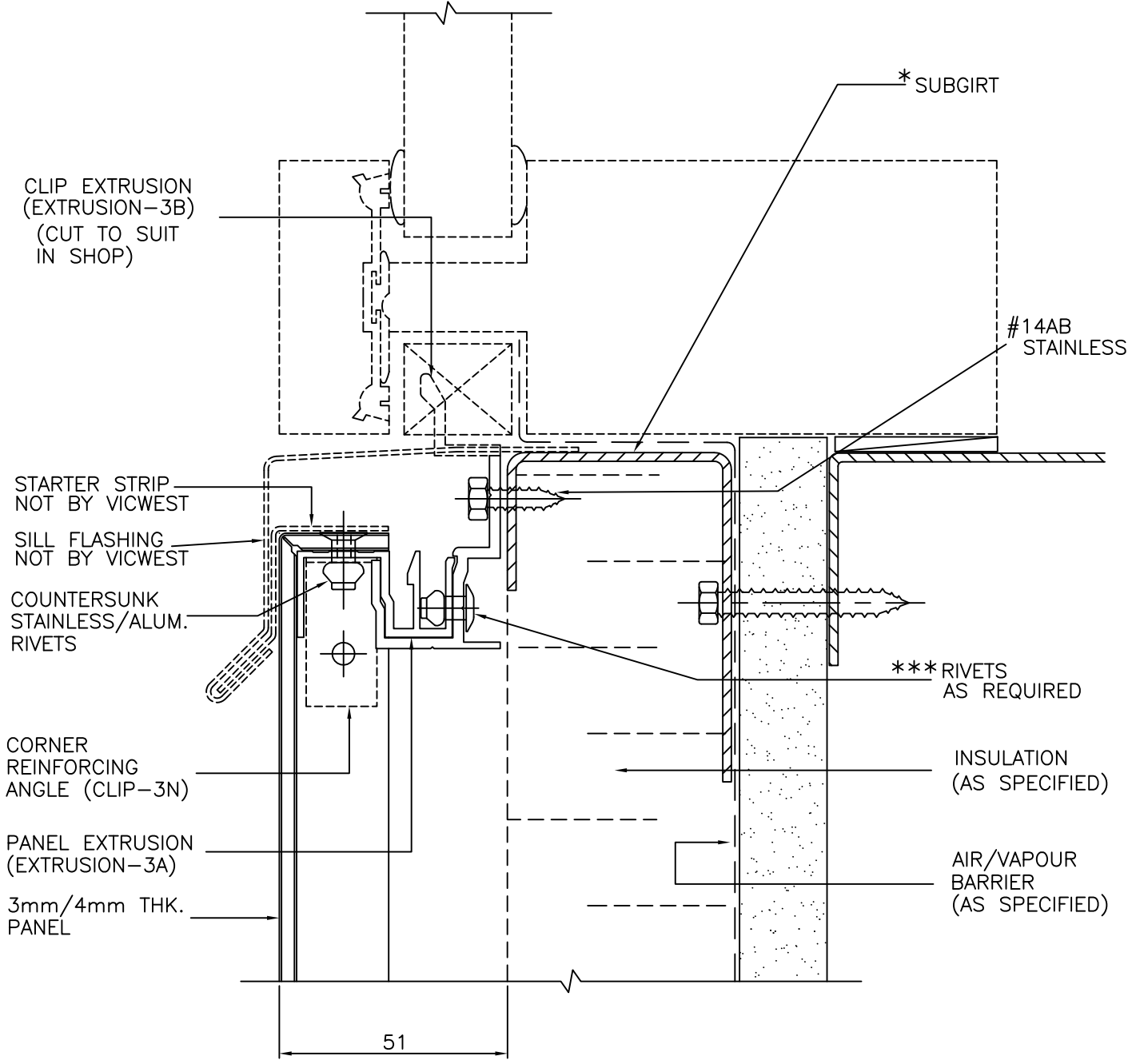


CADD BY:
 DATE: DEC. 17, 2002
 APPD. BY:
 REV. No:
 REV. 1 MAY 31, 2004

TITLE:
COMPOSITE PANEL SYSTEM 3

JOB No:
 SHEET No:
 7
 CAD FILE:
 CPS3R-DETAILS

ENGINEERING DEPT.

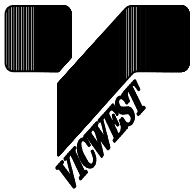


7 WINDOW SILL DETAIL

NOTE: IMPORTANT
 WINDOW SILL FLASHING CONFIGURATION MAY VARY DEPENDING ON TYPE & LOCATION OF WINDOW. (WINDOW NOT BY VICWEST)

* SUBGIRT TO SUIT PROJECT REQUIREMENTS
 *** RIVET ONE CLIP TO EXTRUSION FOR EVERY 1500mm OF PANEL LENGTH. INSTALL RIVETED CLIPS IN MIDDLE 1200mm OF PANEL

Details must be reviewed and modified as required to suit individual project conditions

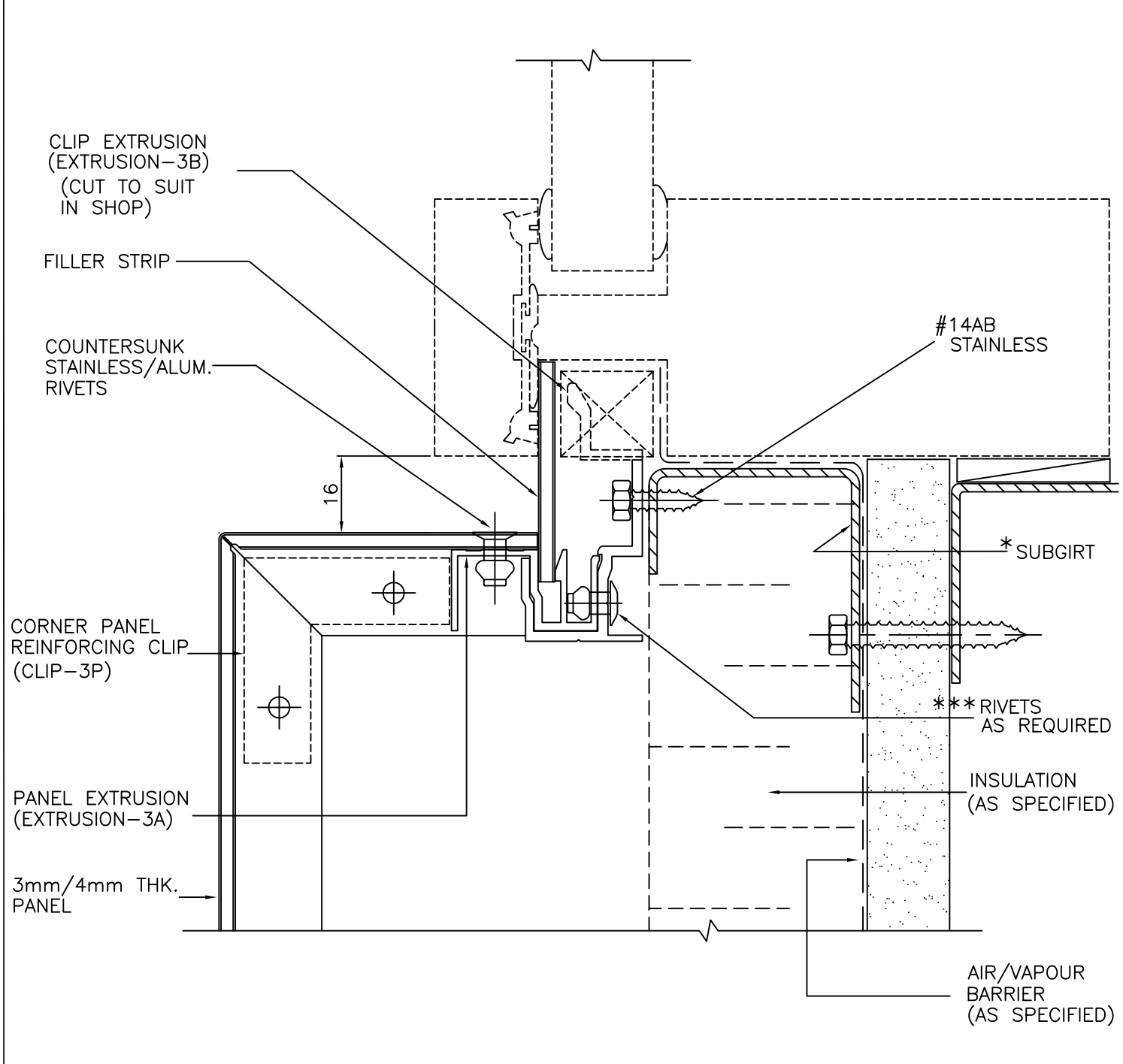


CADD BY:
 DATE: DEC. 17, 2002
 APPD. BY:
 REV. No:
 REV. 1 MAY 31, 2004

TITLE:
COMPOSITE PANEL SYSTEM 3

JOB No:
 SHEET No:
 7A
 CAD FILE:
 CPS3R-DETAILS

ENGINEERING DEPT.



7A WINDOW SILL DETAIL
 (ALTERNATE DETAIL)

* SUBGIRT TO SUIT PROJECT REQUIREMENTS
 *** RIVET ONE CLIP TO EXTRUSION FOR EVERY 1500mm OF PANEL LENGTH. INSTALL RIVETED CLIPS IN MIDDLE 1200mm OF PANEL

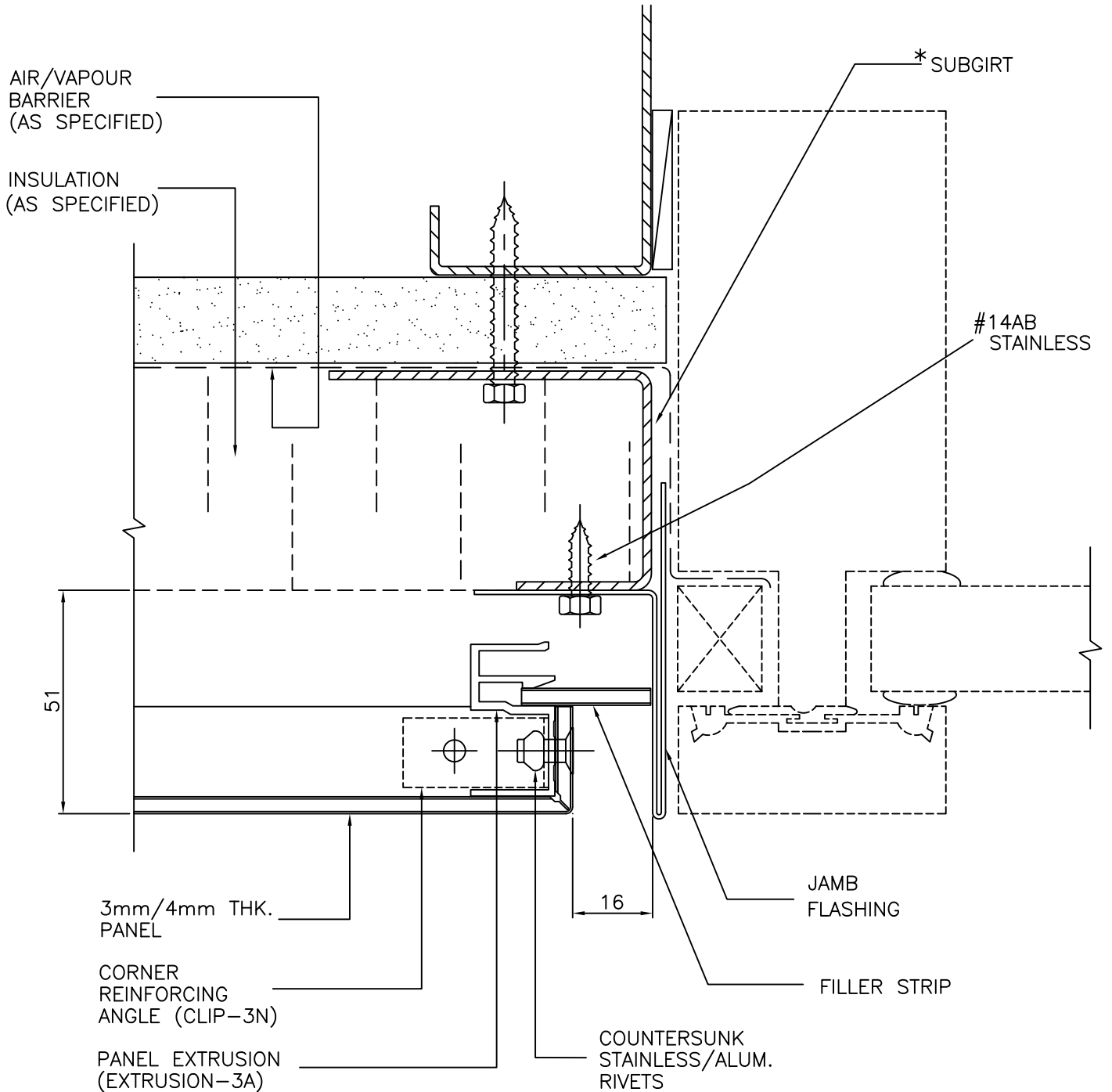


CADD BY:
 DATE: DEC. 17, 2002
 APPD. BY:
 REV. No:
 REV. 1 MAY 31, 2004

TITLE:
COMPOSITE PANEL SYSTEM 3

JOB No:
 SHEET No:
 8
 CAD FILE:
 CPS3R-DETAILS

ENGINEERING DEPT.



8 WINDOW JAMB DETAIL

NOTE: IMPORTANT
 WINDOW JAMB FLASHING CONFIGURATION
 MAY VARY DEPENDING ON TYPE & LOCATION
 OF WINDOW. (WINDOW NOT BY VICWEST)

* SUBGIRT TO SUIT PROJECT REQUIREMENTS

Details must be reviewed and modified as required to suit individual project conditions



CADD BY:
DATE: DEC. 17, 2002
APPD. BY:
REV. No:
REV. 1 MAY 31, 2004

TITLE:
COMPOSITE PANEL SYSTEM 3

JOB No:
SHEET No:
8A
CAD FILE:
CPS3R-DETAILS

ENGINEERING DEPT.

AIR/VAPOUR
BARRIER
(AS SPECIFIED)

INSULATION
(AS SPECIFIED)

3mm/4mm THK.
PANEL

CORNER PANEL
REINFORCING CLIP
TYP. TOP & BOT.
(CLIP-3P)

PANEL EXTRUSION
(EXTRUSION-3A)

16

FILLER STRIP

8A WINDOW JAMB DETAIL
(ALTERNATE DETAIL)

Details must be reviewed and modified as required to suit individual project conditions

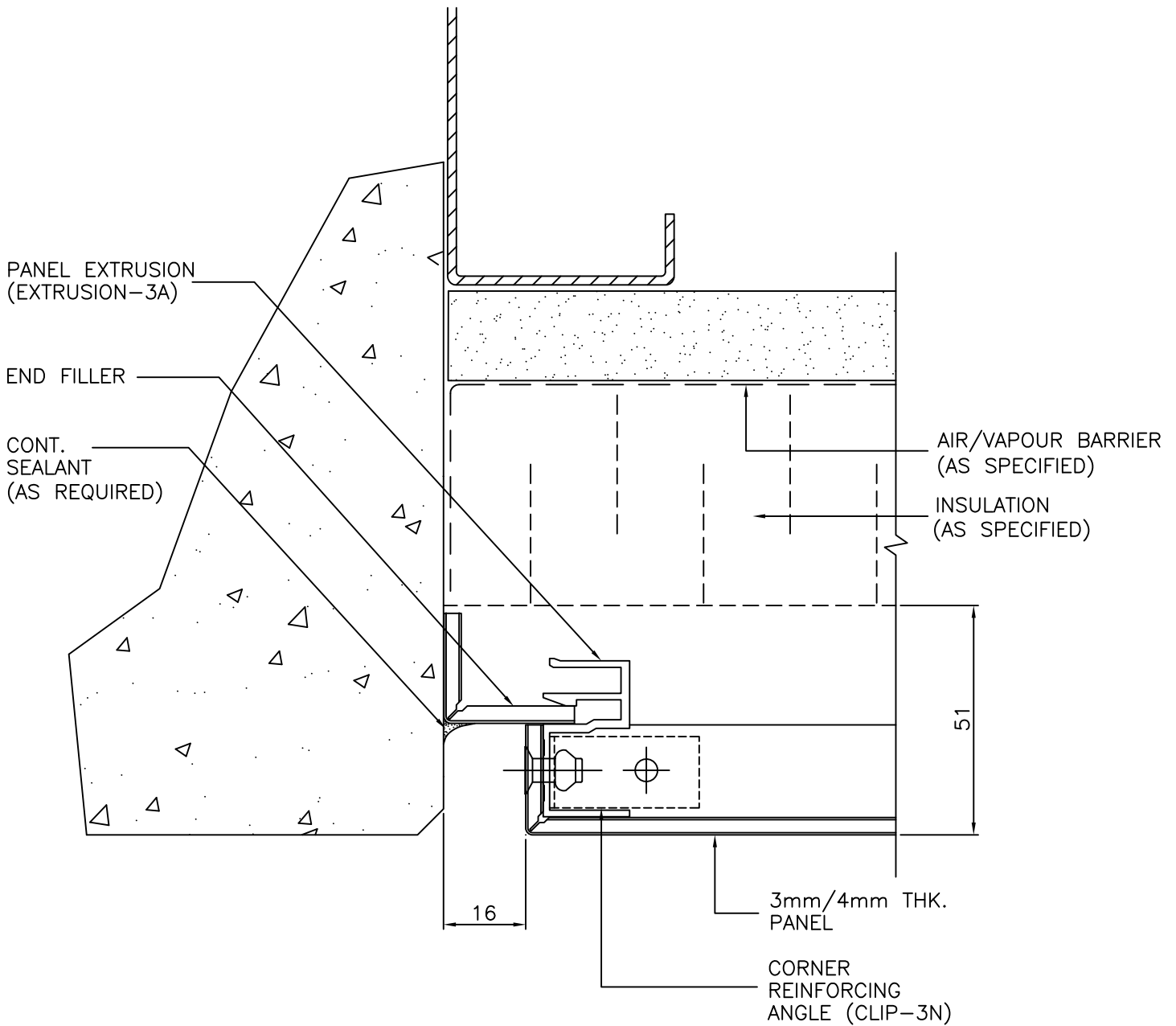


CADD BY:
DATE: DEC. 17, 2002
APPD. BY:
REV. No:
REV. 1 MAY 31, 2004

TITLE:
COMPOSITE PANEL SYSTEM 3

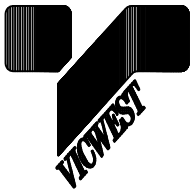
JOB No:
SHEET No:
9
CAD FILE:
CPS3-DETAILS

ENGINEERING DEPT.



9 END DETAIL

Details must be reviewed and modified as required to suit individual project conditions

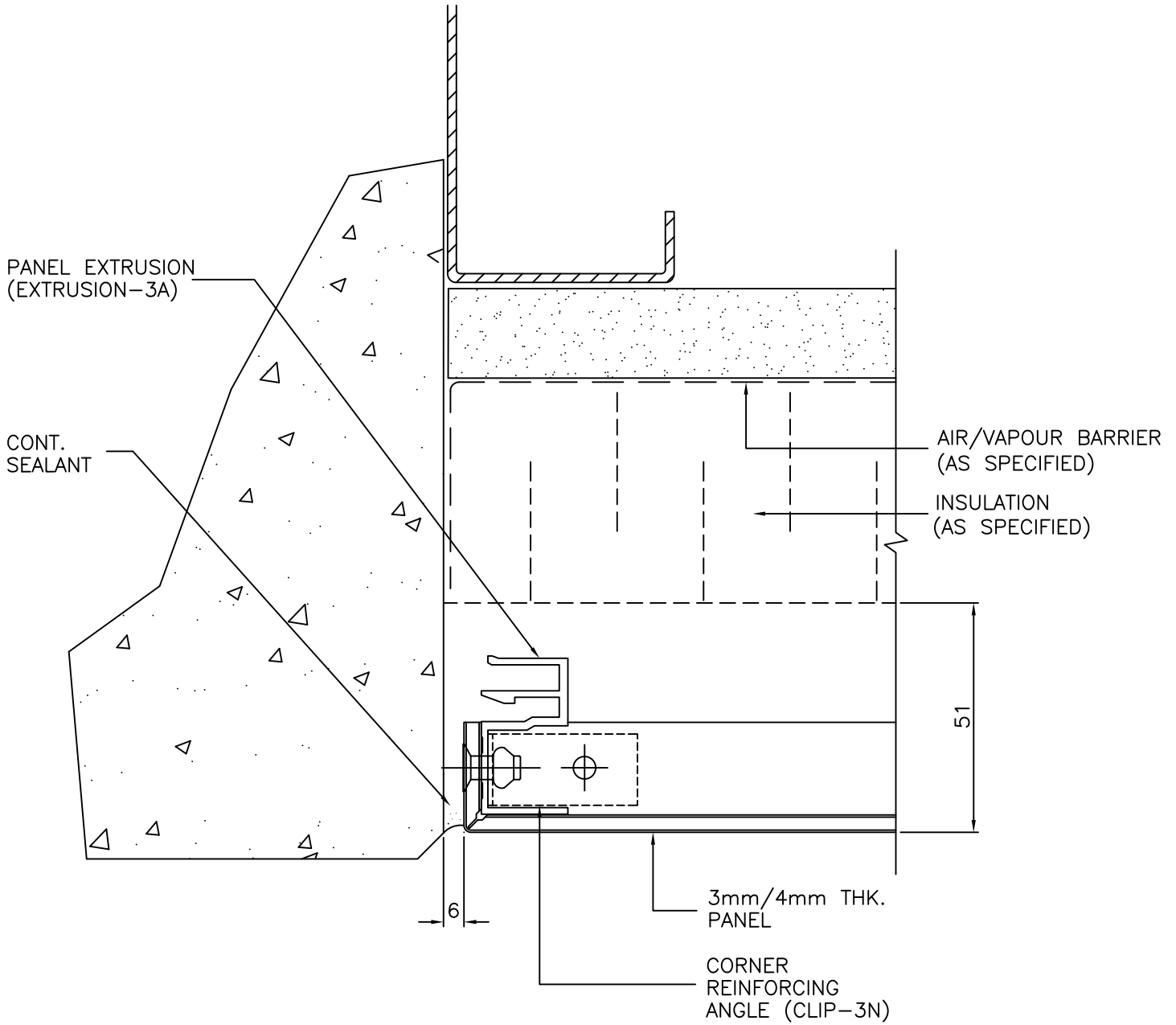


CADD BY:
DATE: DEC. 17, 2002
APPD. BY:
REV. No:
REV. 1 MAY 31, 2004

TITLE:
COMPOSITE PANEL SYSTEM 3

JOB No:
SHEET No:
9A
CAD FILE:
CPS3R-DETAILS

ENGINEERING DEPT.



9A END DETAIL
(ALTERNATE DETAIL)

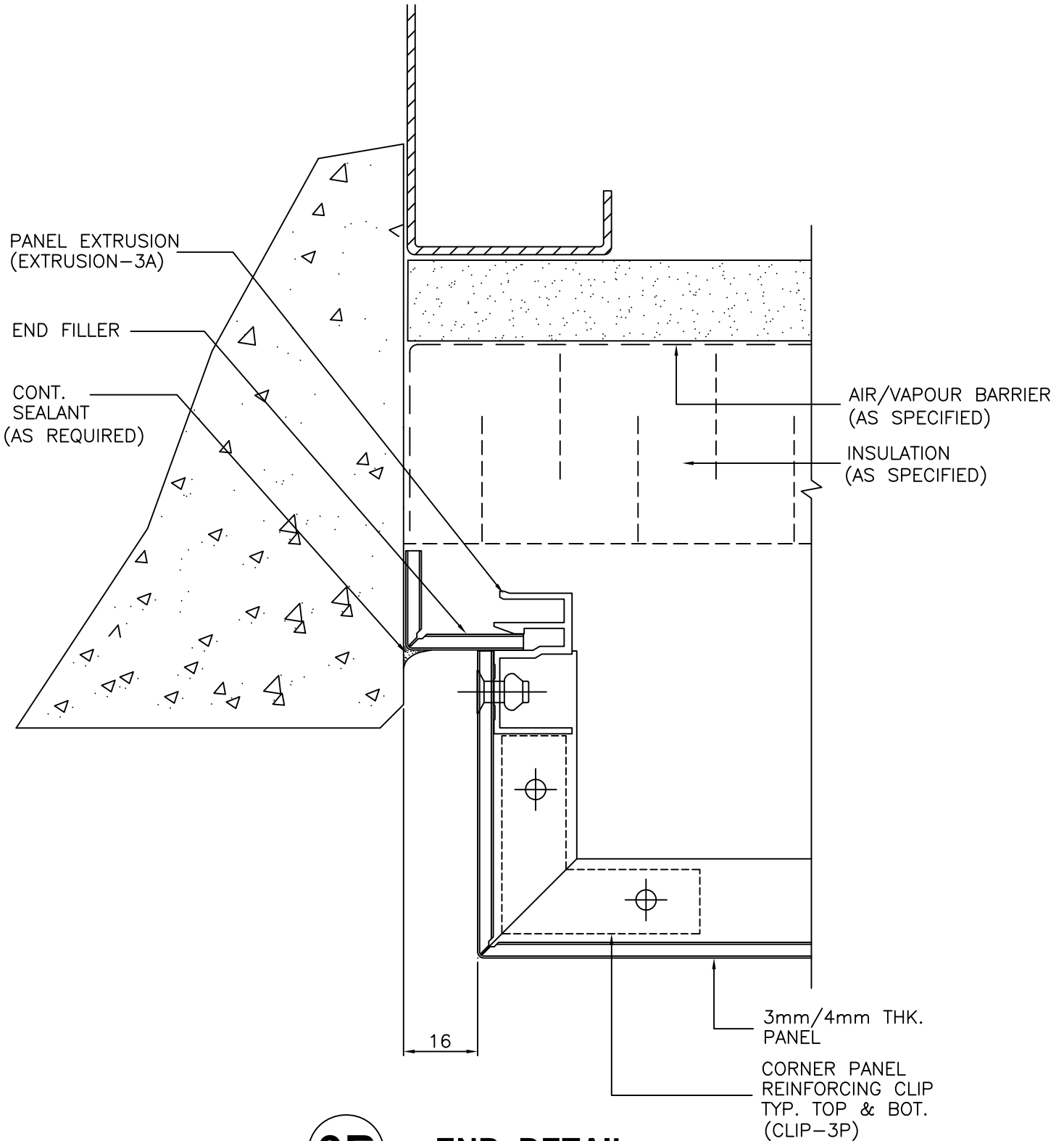


CADD BY:
DATE: DEC. 17, 2002
APPD. BY:
REV. No:
REV. 1 MAY 31, 2004

TITLE:
COMPOSITE PANEL SYSTEM 3

JOB No:
SHEET No:
9B
CAD FILE:
CPS3R-DETAILS

ENGINEERING DEPT.



9B **END DETAIL**
(ALTERNATE DETAIL)

Details must be reviewed and modified as required to suit individual project conditions

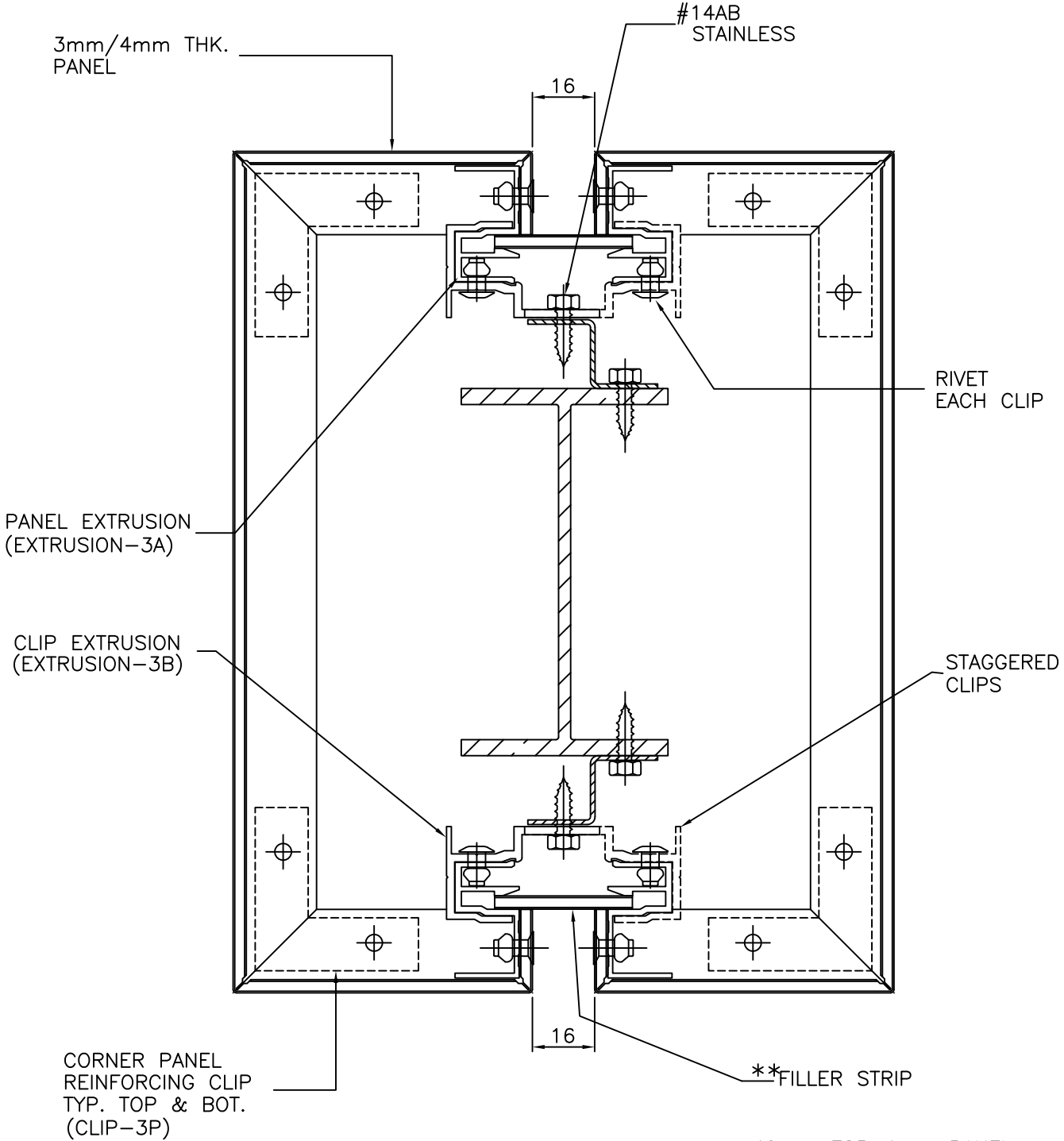


CADD BY:
 DATE: DEC. 17, 2002
 APPD. BY:
 REV. No:
 REV. 1 MAY 31, 2004

TITLE:
COMPOSITE PANEL SYSTEM 3

JOB No:
 SHEET No:
 10A
 CAD FILE:
 CPS3R-DETAILS

ENGINEERING DEPT.



10A RECTANGULAR COLUMN DETAIL

Details must be reviewed and modified as required to suit individual project conditions

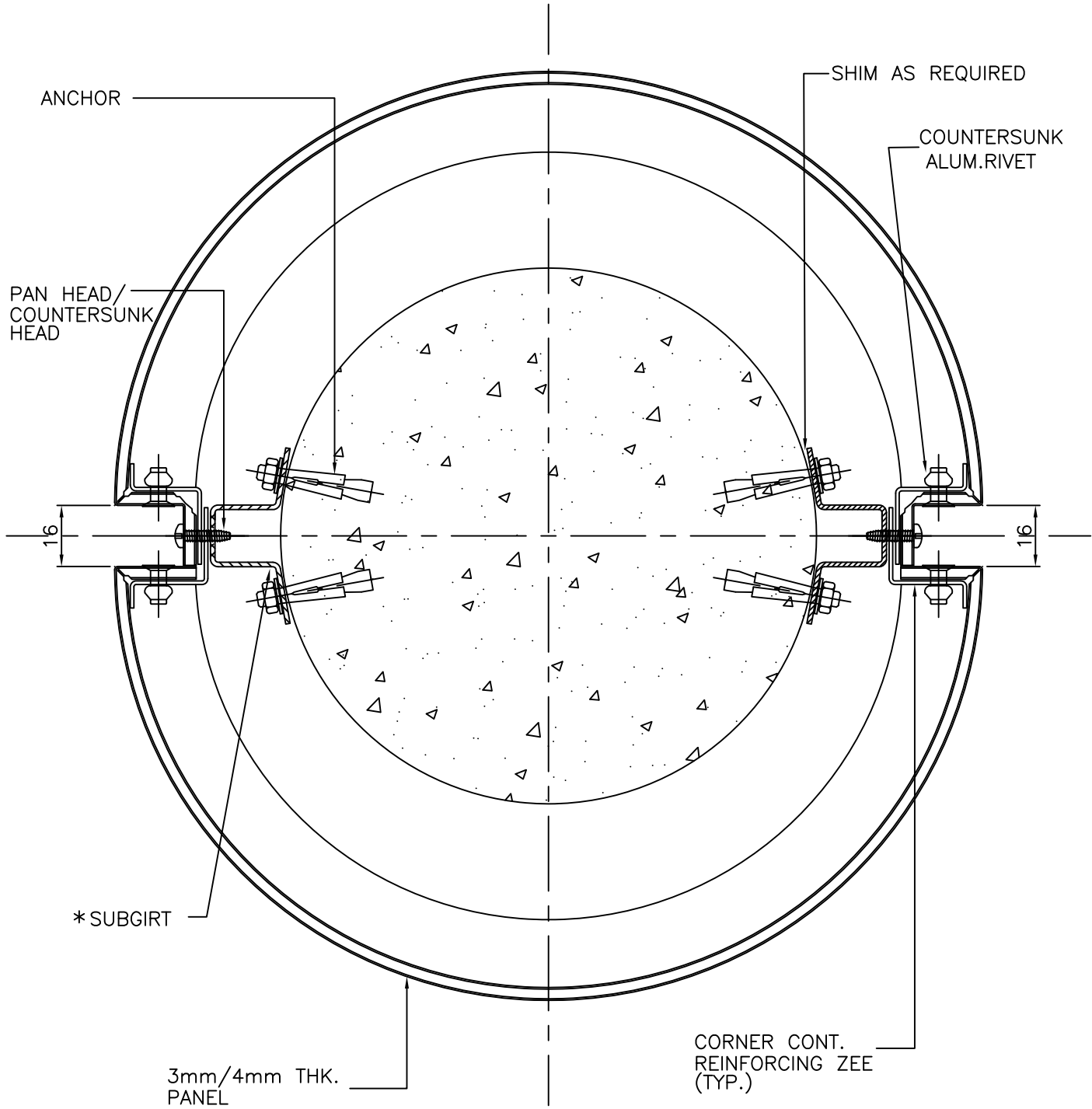


CADD BY:
 DATE: DEC. 17, 2002
 APPD. BY:
 REV. No:

TITLE:
COMPOSITE PANEL SYSTEM 3

JOB No:
 SHEET No: 10B
 CAD FILE: CPS3-DETAILS

ENGINEERING DEPT.



10B CIRCULAR COLUMN DETAIL

* SUBGIRT TO SUIT PROJECT REQUIREMENTS

Details must be reviewed and modified as required to suit individual project conditions

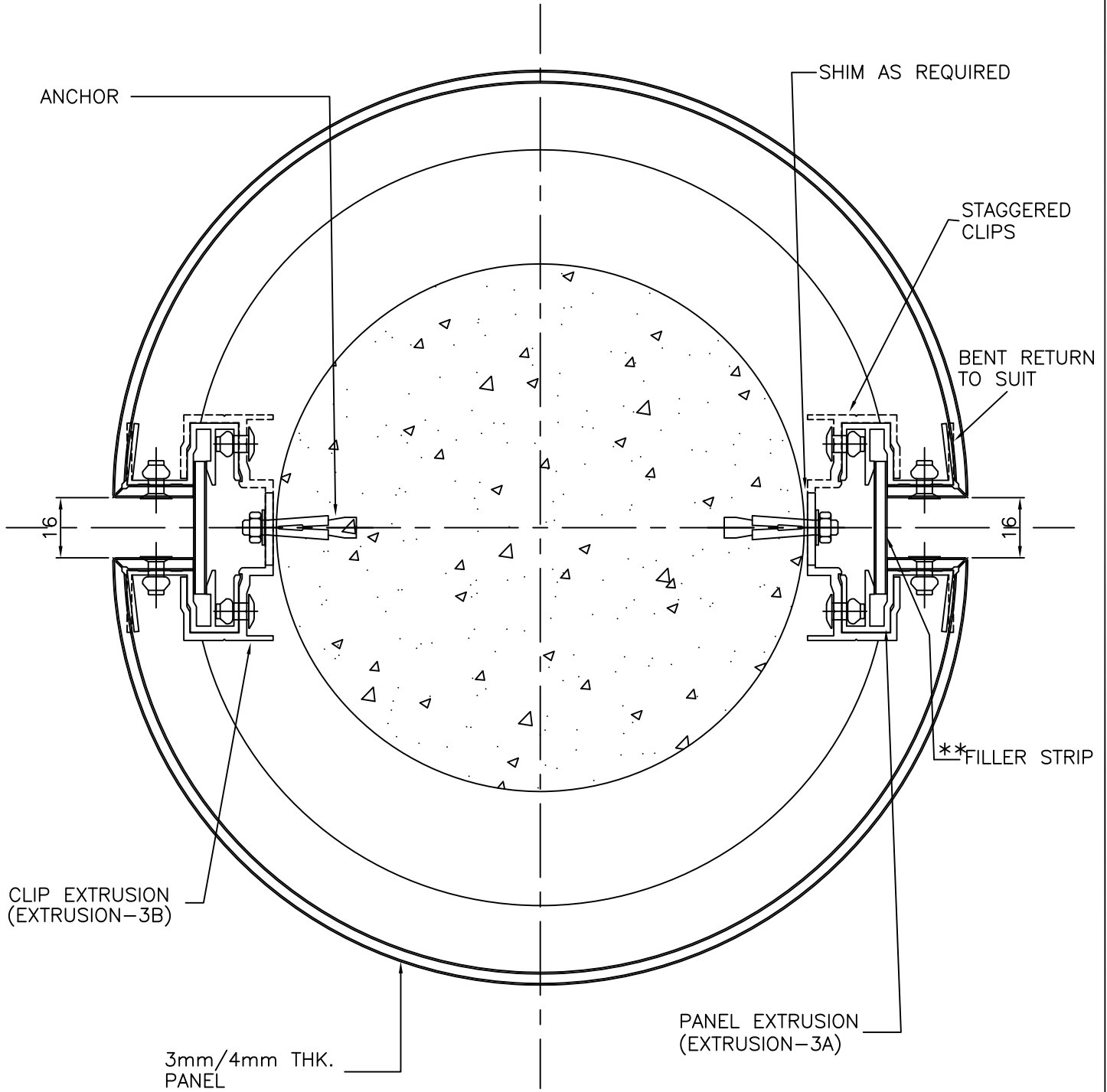


CADD BY:
 DATE: DEC. 17, 2002
 APPD. BY:
 REV. No:
 REV. 1 MAY 31, 2004

TITLE:
COMPOSITE PANEL SYSTEM 3

JOB No:
 SHEET No:
 10C
 CAD FILE:
 CPS3R-DETAILS

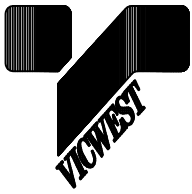
ENGINEERING DEPT.



10C CIRCULAR COLUMN DETAIL

**40mm FOR 4mm PANEL

Details must be reviewed and modified as required to suit individual project conditions

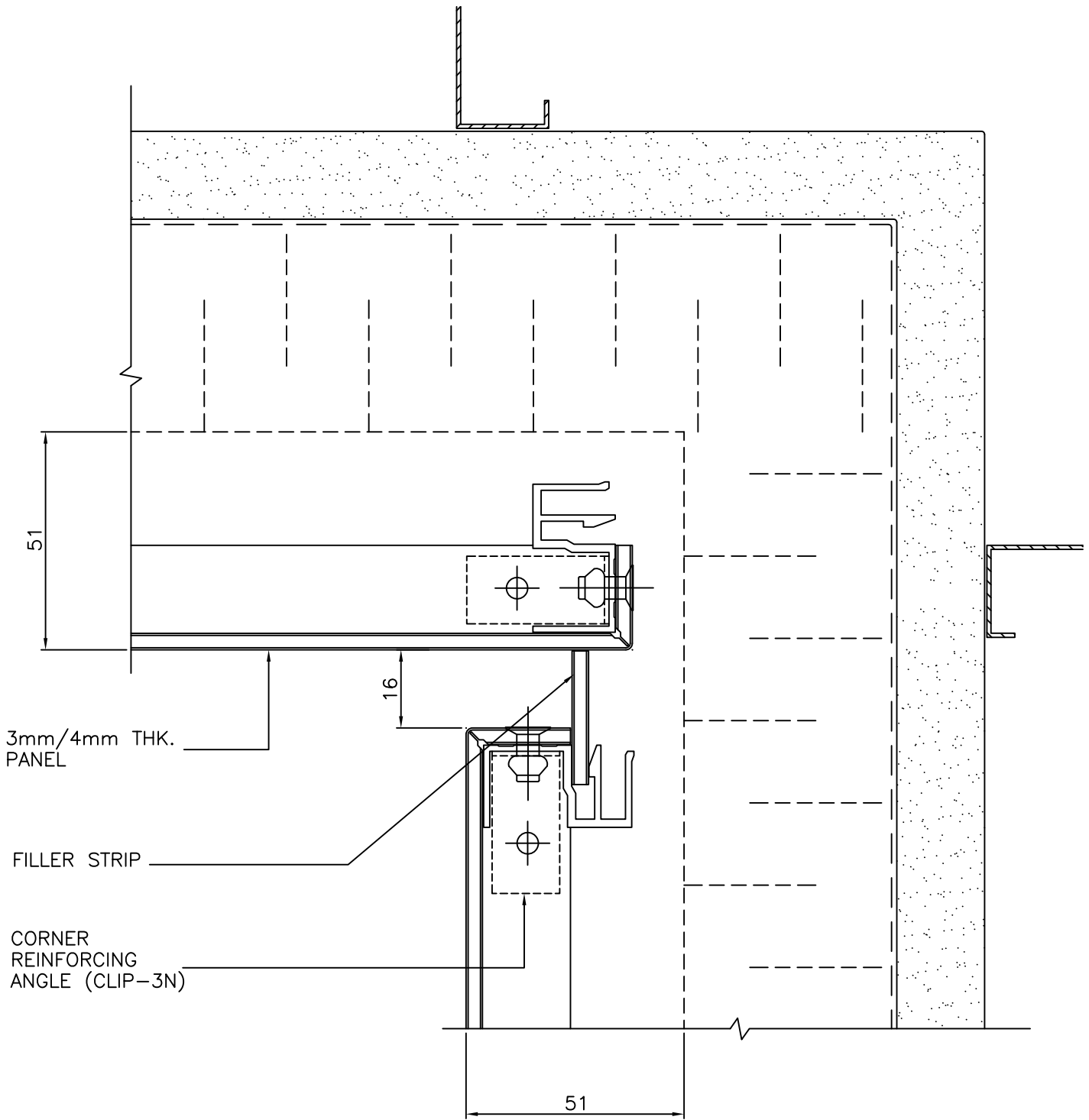


CADD BY:
DATE: DEC. 17, 2002
APPD. BY:
REV. No:
REV. 1 MAY 31, 2004

TITLE:
COMPOSITE PANEL SYSTEM 3

JOB No:
SHEET No:
11
CAD FILE:
CPS3R-DETAILS

ENGINEERING DEPT.



11 INSIDE CORNER DETAIL

Details must be reviewed and modified as required to suit individual project conditions

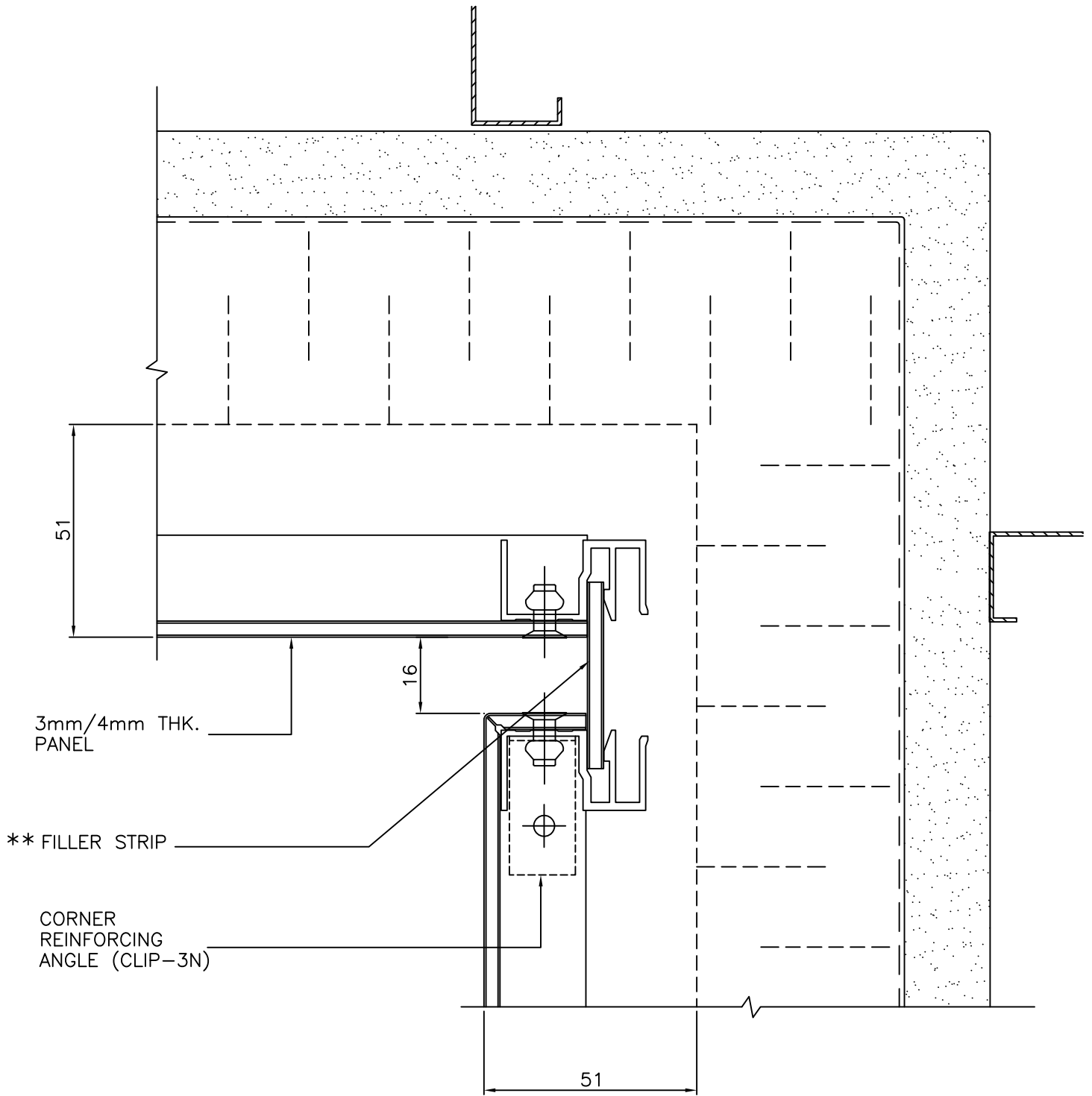


CADD BY:
 DATE: DEC. 17, 2002
 APPD. BY:
 REV. No:
 REV. \triangle 1 MAY 31, 2004

TITLE:
COMPOSITE PANEL SYSTEM 3

JOB No:
 SHEET No:
 11A
 CAD FILE:
 CPS3R-DETAILS

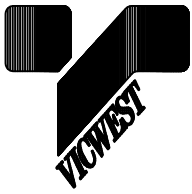
ENGINEERING DEPT.



11A **INSIDE CORNER DETAIL**
 (ALTERNATE DETAIL)

** 40mm FOR 4mm PANEL

Details must be reviewed and modified as required to suit individual project conditions



CADD BY:
DATE: DEC. 17, 2002
APPD. BY:
REV. No:

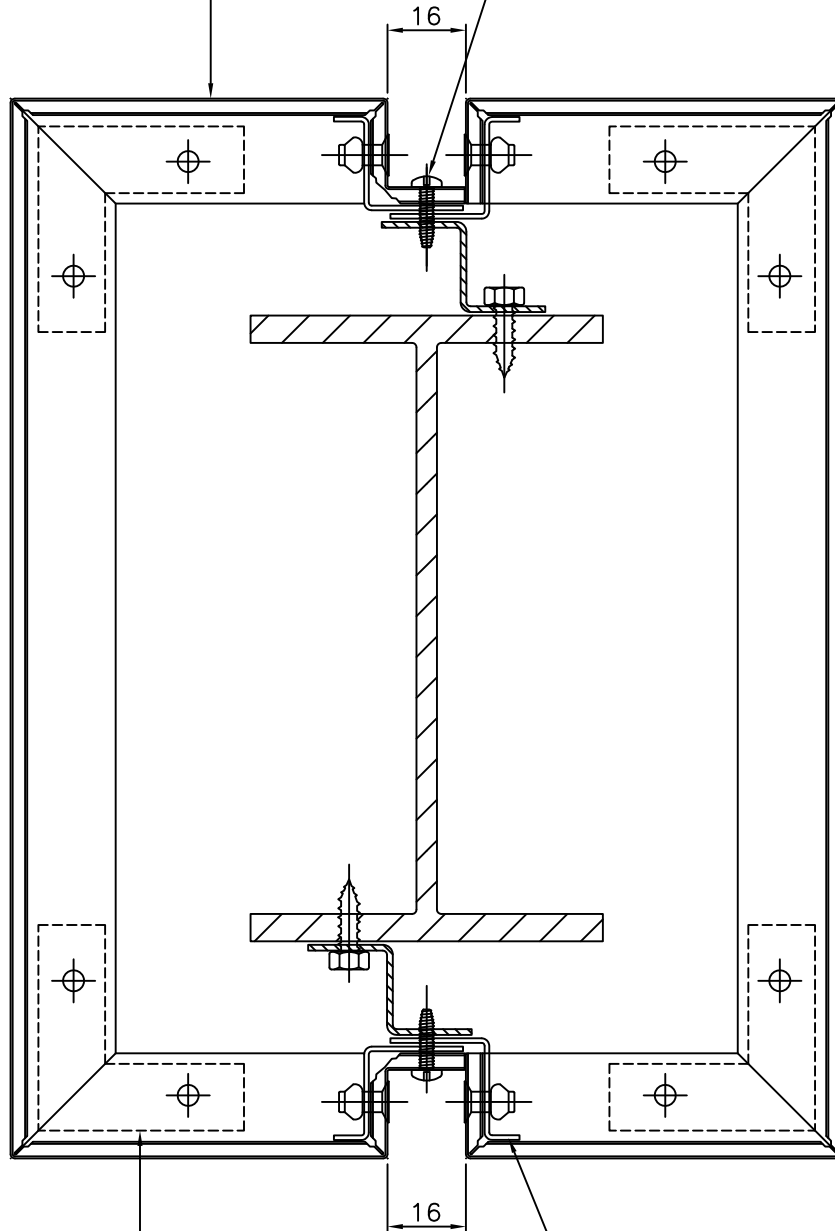
TITLE:
COMPOSITE PANEL SYSTEM 3

JOB No:
SHEET No:
10
CAD FILE:
CPS3-DETAILS

ENGINEERING DEPT.

3mm/4mm THK.
PANEL

PAN HEAD/
COUNTERSUNK HEAD



CORNER PANEL
REINFORCING CLIP
TYP. TOP & BOT.
(CLIP-3P)

CORNER CONT.
REINFORCING ZEE
(TYP.)

10 RECTANGULAR COLUMN DETAIL

Details must be reviewed and modified as required to suit individual project conditions